

to those of an R4 General Residence District, and a corresponding use district is hereby established in the area above described.

SECTION 2. This ordinance shall be in full force and effect from and after passage and publication.

—

*Reclassification Of Area Shown On Map No. 12-G.*

*Be It Ordained by the City Council of the City of Chicago:*

SECTION 1. That the Chicago Zoning Ordinance be amended by changing the M2-2 General Manufacturing District symbols and indications as shown on Map No. 12-G in the area bounded by

a line 611.63 feet south of West 47th Street; a line 527.54 feet east of South Morgan Street; a line from a point 527.54 feet east of South Morgan Avenue and 821.80 feet south of West 47th Street to be connected by a 793.39 foot arc with a chord of 714.07 feet to a point 22.10 feet east of South Morgan Street and 1,327 feet south of West 47th Street; a line 1,327 feet south of West 47th Street; and South Morgan Street,

to those of a Manufacturing Planned Development which is hereby established in the area above described, subject to such use and bulk regulations as are set forth in the Plan of Development herewith attached and made a part hereof and to no others.

SECTION 2. This ordinance shall be in full force and effect from and after its passage and due publication.

Manufacturing Planned Development attached to this ordinance reads as follows:

*Manufacturing Planned Development No. 440*

*Plan Of Development*

*Statements.*

1. The area herein designated as "Manufacturing Planned Development" is controlled by Asphalt Recovery Systems, Inc. which leases and has an option to purchase said property from the owner, Bank of Ravenswood, as Trustee under a Trust Agreement dated December 29, 1983 and known as Trust No. 25-6177, and from the Trust's sole beneficiary Raymond D. Shane.

2. Off-street parking and loading facilities shall be provided in compliance with this Manufacturing Planned Development subject to the review and approval of the Commissioner of Planning.
3. All applicable official reviews, approvals and permits required shall be obtained by the Applicant.
4. Dedication or vacation of streets, alleys and easements or adjustment to rights of way or consolidation or resubdivision shall require a separate submittal on behalf of the Applicant and approval by the City Council.
5. The uses of the area delineated as Manufacturing Planned Development will consist of structures, facilities and equipment for the recycling of asphalt materials, paperboard materials, and other recyclable materials, including outdoor storage of such materials, and the cleaning, bundling, compacting, packing and other processing of such materials for use as a new material in a manufacturing process or reuse as consumer products. The structures, facilities and equipment will be devoted to the storage and recycling of materials containing asphalt and other recyclable materials and the activities related to the operation of a Class II Recycling Facility, in compliance with all applicable performance standards for an M2-2 General Manufacturing District.
6. Any and all service drives or other ingress and egress shall be adequately designed and paved in accordance with the now published regulations of the Bureau of Traffic Engineering and Operations and in compliance with the Municipal Code of Chicago, to provide ingress and egress for motor vehicles, including emergency vehicles. Fire lanes shall be adequately designed and paved in compliance with the Municipal Code of Chicago.
7. Identification signs shall be permitted within the Manufacturing Planned Development subject to the review and approval of the Department of Inspectional Services and the Department of Planning.
8. The information contained in the tables and maps attached hereto provide data concerning the generalized plan of land use for the subject area.
9. The Manufacturing Planning Development herein outlined, and as set forth in the exhibits attached hereto, is subject to the "Rules, Regulations and Procedures in Relation to Planned Development Amendments," as promulgated by the Commissioner of Planning.

Use and Bulk Regulations and Data attached to this Manufacturing Planned Development reads as follows:

(Continued from page 7550)

*Manufacturing Planned Development*

*Use And Bulk Regulations And Data.*

Net Site Sq. Feet	Area Acres	General Description Of Land Use	Maximum Floor Area Ratio	Maximum Percent Of Site Coverage
322,622	7.4064	Recycling of asphalt materials, paperboard materials and other recyclable materials, including outdoor storage of materials to be recycled, off-street parking and loading.	1.0	50%

Gross Site Area = Public Rights Of Way + Net Site Area

346,229 square feet = 23,607 square feet + 322,622 square feet

**Off-Street Parking And Loading Controls**

Minimum Number Of Parking Spaces: Same as required for M2-2 Districts

Minimum Number Of Off-Street Loading Berths: Same as required for M2-2 Districts

Maximum Floor Area Ratio: 1.0

**Setbacks And Site Coverage**

**Perimeter Setbacks at Property Lines:**

Along Morgan Street.....45 feet

Along North Perimeter.....30 feet

Along East and South Perimeters..... 25 feet

Applicant: Asphalt Recovery Systems, Inc.  
5420 Milton Parkway  
Rosemont, Illinois 60018

Date: September 28, 1987

[Maps attached to the Manufacturing Planned Development are printed on pages 7558 through 7561 of this Journal.]

[Plat of Survey omitted for printing purposes but on file and available for public inspection in the Office of the City Clerk.]

~~Reclassification Of Area Shown On Map No. 12-G.~~

*Be It Ordained by the City Council of the City of Chicago:*

SECTION 1. That the Chicago Zoning Ordinance be amended by changing all the R4 General Residence District symbols and indications as shown on Map No. 12-G in area bounded by

South Racine Avenue and West 52nd Street (see attached map),

to those of a B4-2 Restricted Service District, and a corresponding use district is hereby established in the area above described.

SECTION 2. This ordinance shall be in force and effect from and after its passage and due publication.

[Map attached to this ordinance printed on page 7562 of this Journal.]

~~Reclassification Of Area Shown On Map No. 14-F.~~

*Be It Ordained by the City Council of the City of Chicago:*

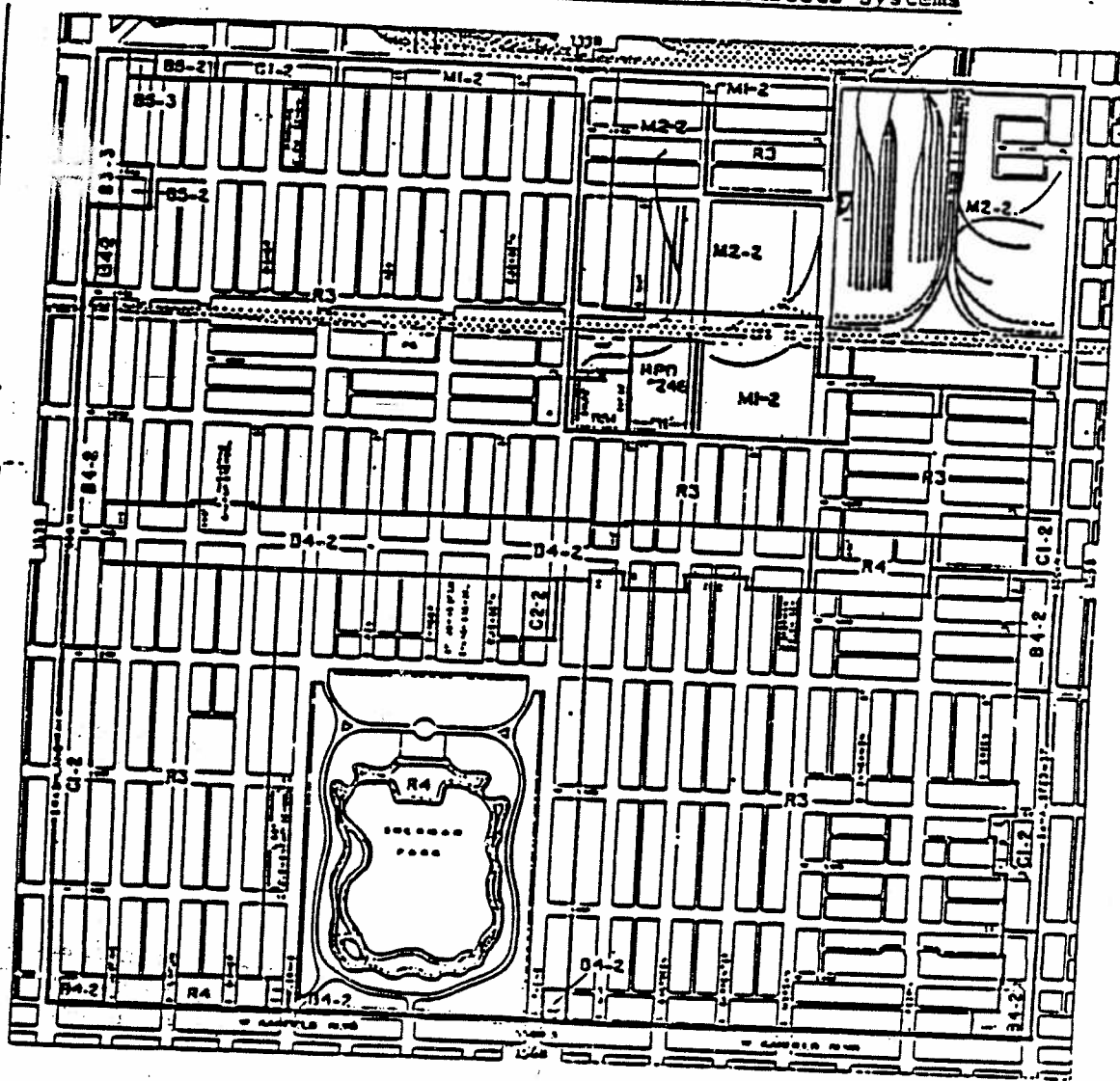
SECTION 1. That the Chicago Zoning Ordinance be amended by changing all the M1-2 Restricted Manufacturing District symbols and indications as shown on Map No. 14-F in area bounded by


a line 287.73 feet north of and parallel to West 59th Street; a line 280.44 feet east of and parallel to South Lowe Avenue; West 59th Street; South Lowe Avenue,

~~(Continued on page 7563)~~

stunsM

MANUFACTURING PLANNED DEVELOPMENT  
Existing Zones and Preferential Streets Systems



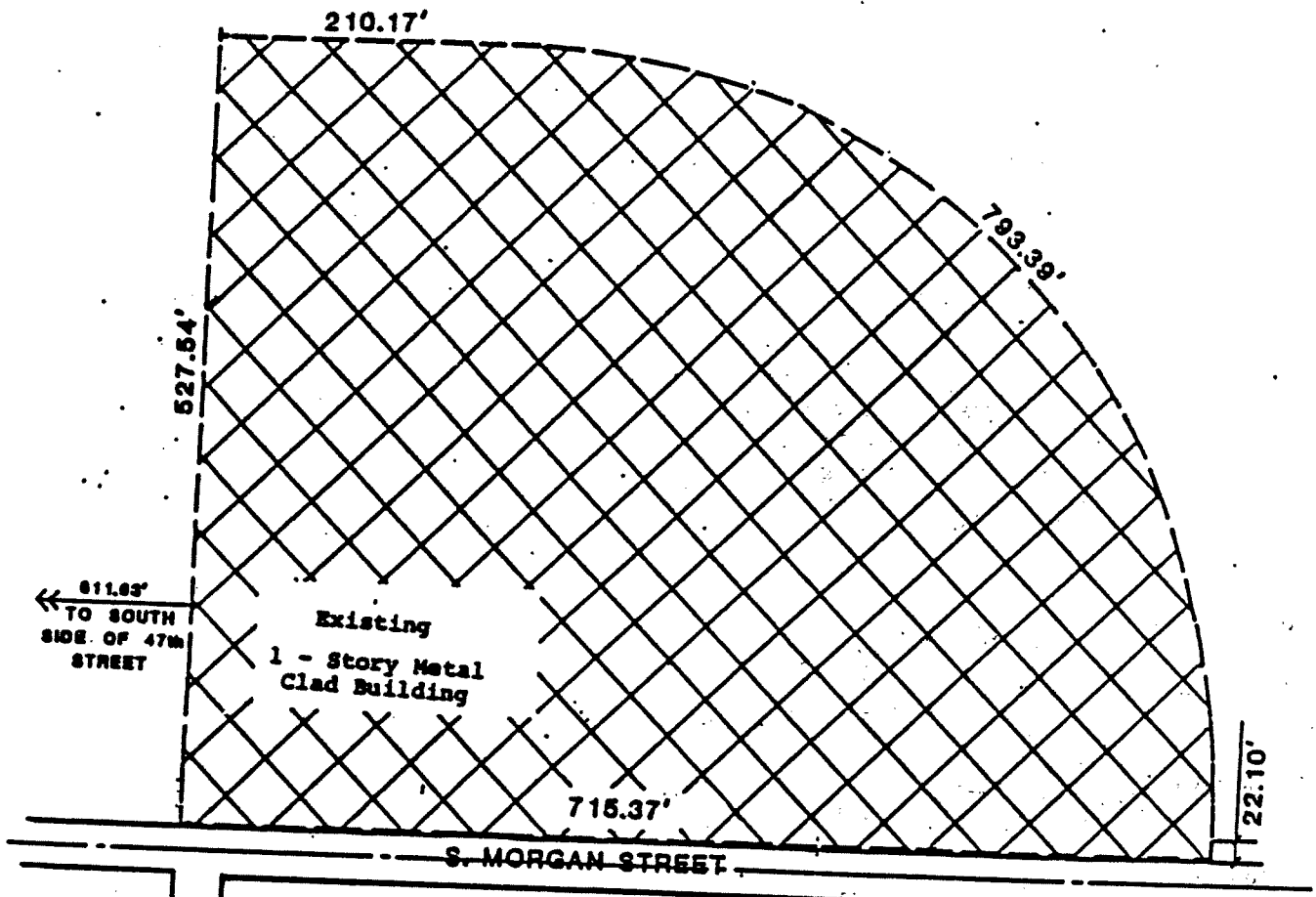
**KEY:**  Subject Property  
**APPLICANT:** Asphalt Recovery Systems, Inc.  
**ADDRESS:** 5420 Milton Parkway  
 Rosemont, Illinois 60018  
**DATE:** September 28, 1987

12/16/87

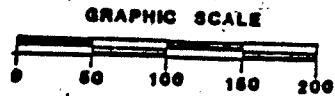
UNFINISHED BUSINESS

7559

PLANNED DEVELOPMENT



PLANNED DEVELOPMENT BOUNDARY  
 MANUFACTURING USE AND  
 OFF-STREET PARKING

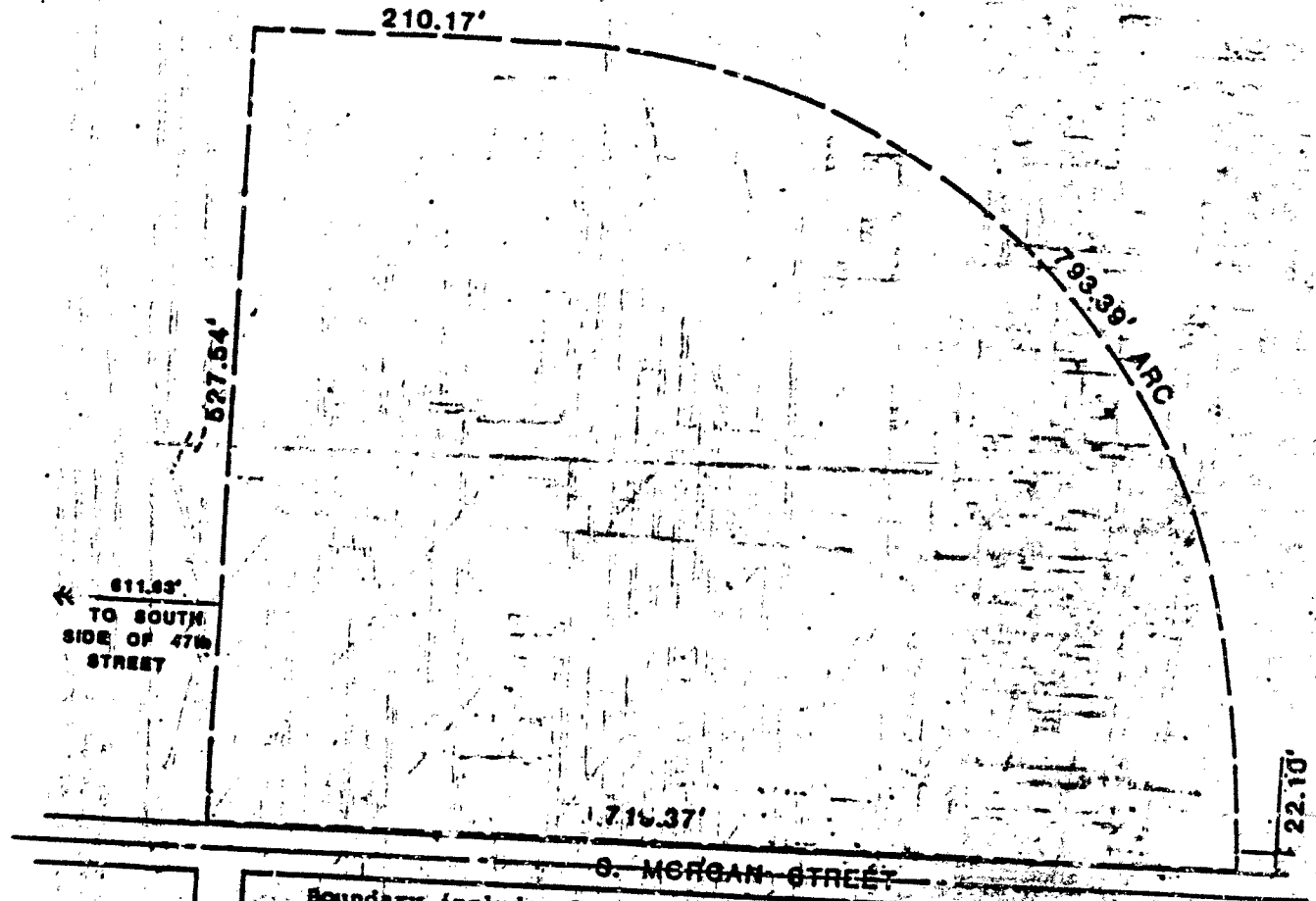


NORTH

APPLICANT: Asphalt Recovery Systems, Inc. DATE: September 28, 1987  
 5420 Milton Parkway  
 Rosemont, Illinois 60018

SCALE: 1"=100'

RIGHT OF WAY ADJUSTMENT

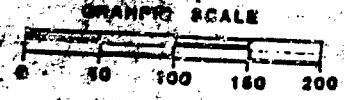


Boundary includes S. Morgan Street to its center line.

PLANNED DEVELOPMENT BOUNDARY

APPLICANT: Asphalt Recovery Systems, Inc.  
 5420 Milton Parkway  
 Rosemont, Illinois 60018

DATE: September 28, 1987



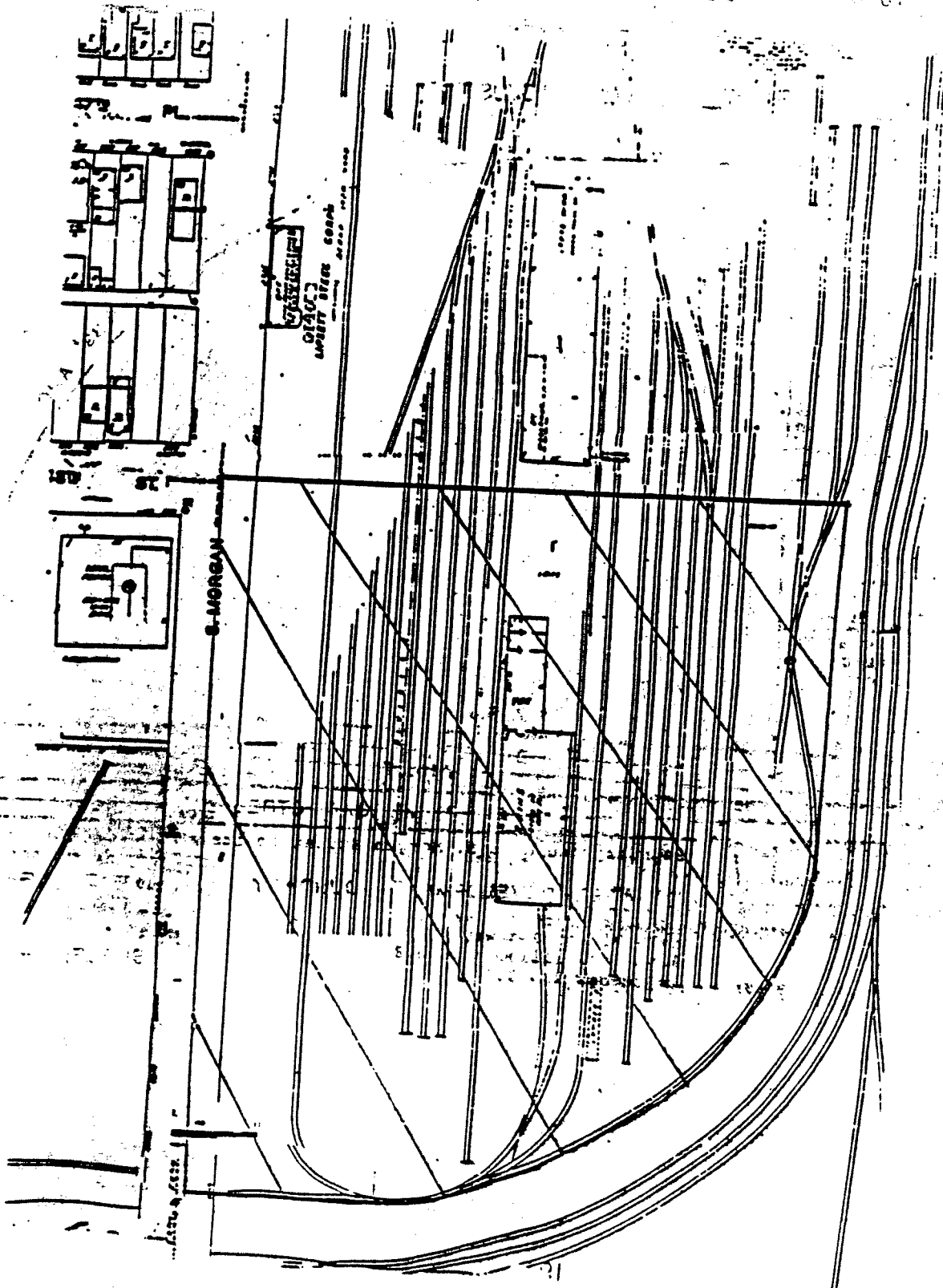
SCALE: 1" = 100'



12/16/87

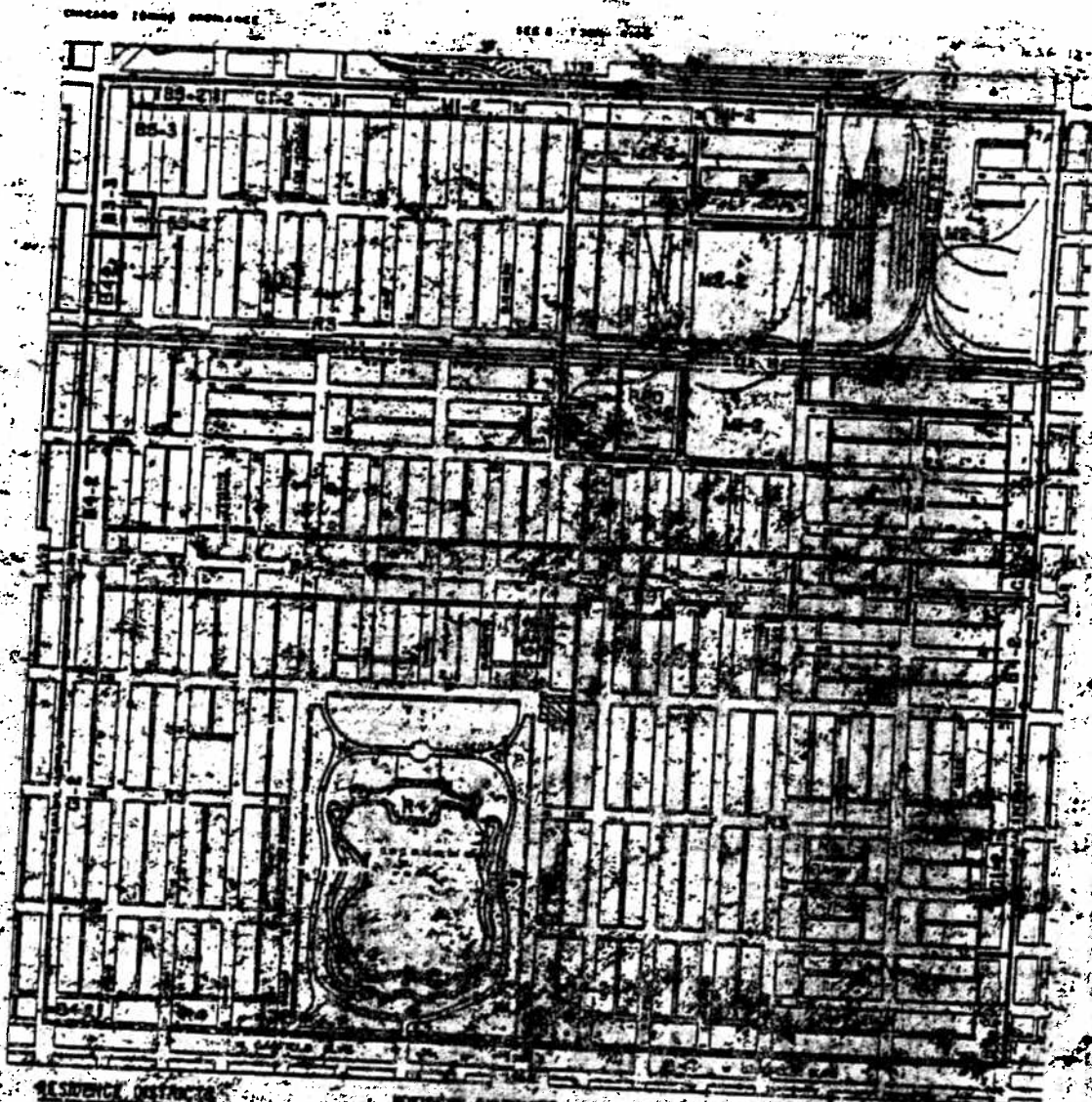
UNFINISHED BUSINESS

7561



UNFINISHED BUSINESS  
UNFINISHED BUSINESS

UNFINISHED BUSINESS



**RESIDENCE DISTRICTS**

01 FULL-TIME RESIDENCE DISTRICT  
 02 FULL-TIME RESIDENCE DISTRICT  
 03 RESIDUAL RESIDENCE DISTRICT  
 04 RESIDUAL RESIDENCE DISTRICT  
 05 RESIDUAL RESIDENCE DISTRICT  
 06 RESIDUAL RESIDENCE DISTRICT  
 07 RESIDUAL RESIDENCE DISTRICT  
 08 RESIDUAL RESIDENCE DISTRICT

**BUSINESS DISTRICTS**

09 BUSINESS DISTRICT  
 10 BUSINESS DISTRICT  
 11 BUSINESS DISTRICT  
 12 BUSINESS DISTRICT  
 13 BUSINESS DISTRICT  
 14 BUSINESS DISTRICT  
 15 BUSINESS DISTRICT  
 16 BUSINESS DISTRICT  
 17 BUSINESS DISTRICT  
 18 BUSINESS DISTRICT  
 19 BUSINESS DISTRICT  
 20 BUSINESS DISTRICT  
 21 BUSINESS DISTRICT  
 22 BUSINESS DISTRICT  
 23 BUSINESS DISTRICT  
 24 BUSINESS DISTRICT  
 25 BUSINESS DISTRICT  
 26 BUSINESS DISTRICT  
 27 BUSINESS DISTRICT  
 28 BUSINESS DISTRICT  
 29 BUSINESS DISTRICT  
 30 BUSINESS DISTRICT  
 31 BUSINESS DISTRICT  
 32 BUSINESS DISTRICT  
 33 BUSINESS DISTRICT  
 34 BUSINESS DISTRICT  
 35 BUSINESS DISTRICT  
 36 BUSINESS DISTRICT  
 37 BUSINESS DISTRICT  
 38 BUSINESS DISTRICT  
 39 BUSINESS DISTRICT  
 40 BUSINESS DISTRICT  
 41 BUSINESS DISTRICT  
 42 BUSINESS DISTRICT  
 43 BUSINESS DISTRICT  
 44 BUSINESS DISTRICT  
 45 BUSINESS DISTRICT  
 46 BUSINESS DISTRICT  
 47 BUSINESS DISTRICT  
 48 BUSINESS DISTRICT  
 49 BUSINESS DISTRICT  
 50 BUSINESS DISTRICT  
 51 BUSINESS DISTRICT  
 52 BUSINESS DISTRICT  
 53 BUSINESS DISTRICT  
 54 BUSINESS DISTRICT  
 55 BUSINESS DISTRICT  
 56 BUSINESS DISTRICT  
 57 BUSINESS DISTRICT  
 58 BUSINESS DISTRICT  
 59 BUSINESS DISTRICT  
 60 BUSINESS DISTRICT  
 61 BUSINESS DISTRICT  
 62 BUSINESS DISTRICT  
 63 BUSINESS DISTRICT  
 64 BUSINESS DISTRICT  
 65 BUSINESS DISTRICT  
 66 BUSINESS DISTRICT  
 67 BUSINESS DISTRICT  
 68 BUSINESS DISTRICT  
 69 BUSINESS DISTRICT  
 70 BUSINESS DISTRICT  
 71 BUSINESS DISTRICT  
 72 BUSINESS DISTRICT  
 73 BUSINESS DISTRICT  
 74 BUSINESS DISTRICT  
 75 BUSINESS DISTRICT  
 76 BUSINESS DISTRICT  
 77 BUSINESS DISTRICT  
 78 BUSINESS DISTRICT  
 79 BUSINESS DISTRICT  
 80 BUSINESS DISTRICT  
 81 BUSINESS DISTRICT  
 82 BUSINESS DISTRICT  
 83 BUSINESS DISTRICT  
 84 BUSINESS DISTRICT  
 85 BUSINESS DISTRICT  
 86 BUSINESS DISTRICT  
 87 BUSINESS DISTRICT  
 88 BUSINESS DISTRICT  
 89 BUSINESS DISTRICT  
 90 BUSINESS DISTRICT  
 91 BUSINESS DISTRICT  
 92 BUSINESS DISTRICT  
 93 BUSINESS DISTRICT  
 94 BUSINESS DISTRICT  
 95 BUSINESS DISTRICT  
 96 BUSINESS DISTRICT  
 97 BUSINESS DISTRICT  
 98 BUSINESS DISTRICT  
 99 BUSINESS DISTRICT  
 100 BUSINESS DISTRICT

**COMMERCIAL DISTRICTS**

101 COMMERCIAL DISTRICT  
 102 COMMERCIAL DISTRICT  
 103 COMMERCIAL DISTRICT  
 104 COMMERCIAL DISTRICT  
 105 COMMERCIAL DISTRICT  
 106 COMMERCIAL DISTRICT  
 107 COMMERCIAL DISTRICT  
 108 COMMERCIAL DISTRICT  
 109 COMMERCIAL DISTRICT  
 110 COMMERCIAL DISTRICT  
 111 COMMERCIAL DISTRICT  
 112 COMMERCIAL DISTRICT  
 113 COMMERCIAL DISTRICT  
 114 COMMERCIAL DISTRICT  
 115 COMMERCIAL DISTRICT  
 116 COMMERCIAL DISTRICT  
 117 COMMERCIAL DISTRICT  
 118 COMMERCIAL DISTRICT  
 119 COMMERCIAL DISTRICT  
 120 COMMERCIAL DISTRICT  
 121 COMMERCIAL DISTRICT  
 122 COMMERCIAL DISTRICT  
 123 COMMERCIAL DISTRICT  
 124 COMMERCIAL DISTRICT  
 125 COMMERCIAL DISTRICT  
 126 COMMERCIAL DISTRICT  
 127 COMMERCIAL DISTRICT  
 128 COMMERCIAL DISTRICT  
 129 COMMERCIAL DISTRICT  
 130 COMMERCIAL DISTRICT  
 131 COMMERCIAL DISTRICT  
 132 COMMERCIAL DISTRICT  
 133 COMMERCIAL DISTRICT  
 134 COMMERCIAL DISTRICT  
 135 COMMERCIAL DISTRICT  
 136 COMMERCIAL DISTRICT  
 137 COMMERCIAL DISTRICT  
 138 COMMERCIAL DISTRICT  
 139 COMMERCIAL DISTRICT  
 140 COMMERCIAL DISTRICT  
 141 COMMERCIAL DISTRICT  
 142 COMMERCIAL DISTRICT  
 143 COMMERCIAL DISTRICT  
 144 COMMERCIAL DISTRICT  
 145 COMMERCIAL DISTRICT  
 146 COMMERCIAL DISTRICT  
 147 COMMERCIAL DISTRICT  
 148 COMMERCIAL DISTRICT  
 149 COMMERCIAL DISTRICT  
 150 COMMERCIAL DISTRICT

**INDUSTRIAL DISTRICTS**

151 INDUSTRIAL DISTRICT  
 152 INDUSTRIAL DISTRICT  
 153 INDUSTRIAL DISTRICT  
 154 INDUSTRIAL DISTRICT  
 155 INDUSTRIAL DISTRICT  
 156 INDUSTRIAL DISTRICT  
 157 INDUSTRIAL DISTRICT  
 158 INDUSTRIAL DISTRICT  
 159 INDUSTRIAL DISTRICT  
 160 INDUSTRIAL DISTRICT  
 161 INDUSTRIAL DISTRICT  
 162 INDUSTRIAL DISTRICT  
 163 INDUSTRIAL DISTRICT  
 164 INDUSTRIAL DISTRICT  
 165 INDUSTRIAL DISTRICT  
 166 INDUSTRIAL DISTRICT  
 167 INDUSTRIAL DISTRICT  
 168 INDUSTRIAL DISTRICT  
 169 INDUSTRIAL DISTRICT  
 170 INDUSTRIAL DISTRICT  
 171 INDUSTRIAL DISTRICT  
 172 INDUSTRIAL DISTRICT  
 173 INDUSTRIAL DISTRICT  
 174 INDUSTRIAL DISTRICT  
 175 INDUSTRIAL DISTRICT  
 176 INDUSTRIAL DISTRICT  
 177 INDUSTRIAL DISTRICT  
 178 INDUSTRIAL DISTRICT  
 179 INDUSTRIAL DISTRICT  
 180 INDUSTRIAL DISTRICT  
 181 INDUSTRIAL DISTRICT  
 182 INDUSTRIAL DISTRICT  
 183 INDUSTRIAL DISTRICT  
 184 INDUSTRIAL DISTRICT  
 185 INDUSTRIAL DISTRICT  
 186 INDUSTRIAL DISTRICT  
 187 INDUSTRIAL DISTRICT  
 188 INDUSTRIAL DISTRICT  
 189 INDUSTRIAL DISTRICT  
 190 INDUSTRIAL DISTRICT  
 191 INDUSTRIAL DISTRICT  
 192 INDUSTRIAL DISTRICT  
 193 INDUSTRIAL DISTRICT  
 194 INDUSTRIAL DISTRICT  
 195 INDUSTRIAL DISTRICT  
 196 INDUSTRIAL DISTRICT  
 197 INDUSTRIAL DISTRICT  
 198 INDUSTRIAL DISTRICT  
 199 INDUSTRIAL DISTRICT  
 200 INDUSTRIAL DISTRICT