

Reclassification of Area Shown on Map No. 5-I.

Be It Ordained by the City Council of the City of Chicago:

SECTION 1. That the Chicago Zoning Ordinance be amended by changing all the B4-1 Restricted Service District and R3 General Residence District symbols and indications as shown on Map No. 5-I in the area bounded by

W. Charleston Avenue; a line 171 feet east of N. Maplewood Avenue; the alley next south of and parallel to W. Charleston Avenue; the alley next west of and parallel to N. Campbell Avenue; a line 353 feet southeast of N. Maplewood Avenue and perpendicular to N. Milwaukee Avenue; N. Milwaukee Avenue and N. Maplewood Avenue

to those of a B5-1 General Service District, and a corresponding use district is hereby established in the area above described.

SECTION 2. This ordinance shall be in force and effect from and after its passage and due publication.

Reclassification of Area Shown on Map No. 5-I.

Be It Ordained by the City Council of the City of Chicago:

SECTION 1. That the Chicago Zoning Ordinance be amended by changing all the R3 General Residence District symbols and indications as shown on Map No. 5-I in the area bounded by

the alley north of and parallel to W. Cortland Street; a line 95 feet 6 inches west of and parallel to N. Campbell Avenue; W. Cortland Street; a line 214 feet west of and parallel to N. Campbell Avenue and the alley north of and parallel to W. Cortland Street

to those of a C1-1 Restricted Commercial District, and a corresponding use district is hereby established in the area above described.

SECTION 2. This ordinance shall be in force and effect from and after its passage and due publication.

Reclassification of Area Shown on Map No. 9-N.

Be It Ordained by the City Council of the City of Chicago:

SECTION 1. That the be amended by change Service District symbol on Map No. 9-N in the

W. Belmont Avenue line 125 feet north of Avenue and a line 51 parallel to N. Nottin

to those of a B4-2 Re a corresponding use d in the area above descri

SECTION 2. This ord effect from and after : tion.

Reclassification of Area Shown on Map No. 12-E.

Be It Ordained by the City Council of the City of Chicago:

SECTION 1. That the Chicago Zoning Ordinance be amended by changing all the M1-2 Restricted Manufacturing and C1-2 Restricted Commercial District symbols and indications as shown on Map No. 12-E in the area bounded by

a line 190 feet south of and parallel to E. 51st Street; the alley next east of and parallel to S. State Street; E. 53rd Street and S. State Street

to those of an R4 General Residence District, and a corresponding use district is hereby established in the area above described.

SECTION 2. This ordinance shall be in force and effect from and after its passage and due publication.

Reclassification of Area Shown on Map No. 16-E.

Be It Ordained by the City Council of the City of Chicago:

SECTION 1. That the Chicago Zoning Ordinance be amended by changing all the R3 General Residence District symbols and indications as shown on Map No. 16-E in the area bounded by

a line 147 feet north of and parallel to E. 71st Street; S. Calumet Avenue; a line 100 feet north of and parallel to E. 71st Street and the alley next west of and parallel to S. Calumet Avenue

to those of a B4-1 Restricted Service District, and a corresponding use district is hereby established in the area above described.

SECTION 2. This ordinance shall be in force and effect from and after its passage and due publication.

Reclassification of Area Shown on Map No. 17-I.

Be It Ordained by the City Council of the City of Chicago:

SECTION 1. That the Chicago Zoning Ordinance be amended by changing all the B4-1 Restricted Service District symbols and indications as shown on Map No. 17-I in the area bounded by

W. Touhy Avenue on the north; a line 140 feet west of N. Rockwell Street on the east; a line 100 feet east of N. Washtenaw Avenue on the west and the public alley 129 feet, 9 3/4 inches south of W. Touhy Avenue on the south

to the designation of an Institutional Planned Development which is hereby established in the area above described, subject to such use and bulk regulations as are set forth in the Plan Development herewith attached and made a part thereof and to no others.

[Plan of Development printed on pages 5112-5116 of this Journal]

SECTION 2. This ordinance shall be in force and effect from and after its passage and due publication.

Reclassification of Area Shown on Map No. 17-I.

Be It Ordained by the City Council of the City of Chicago:

SECTION 1. That the Chicago Zoning Ordinance be amended by changing all the R3 General Residence District symbols and indications as shown on Map No. 17-I in the area bounded by

W. Touhy Avenue; N. Sacramento Avenue; a line 623.9 feet south of W. Touhy Avenue and a line 694.97 feet west of N. Sacramento Avenue

to the designation of a Residential Planned Development which is hereby established in the area above described, subject to such use and bulk regulations as are set forth in the Plan of Development herewith attached and made a part thereof and to no others.

[Plan of Development printed on pages 5117-5121 of this Journal]

SECTION 2. This ordinance shall be in force and effect from and after its passage and due publication.

164

165
↓

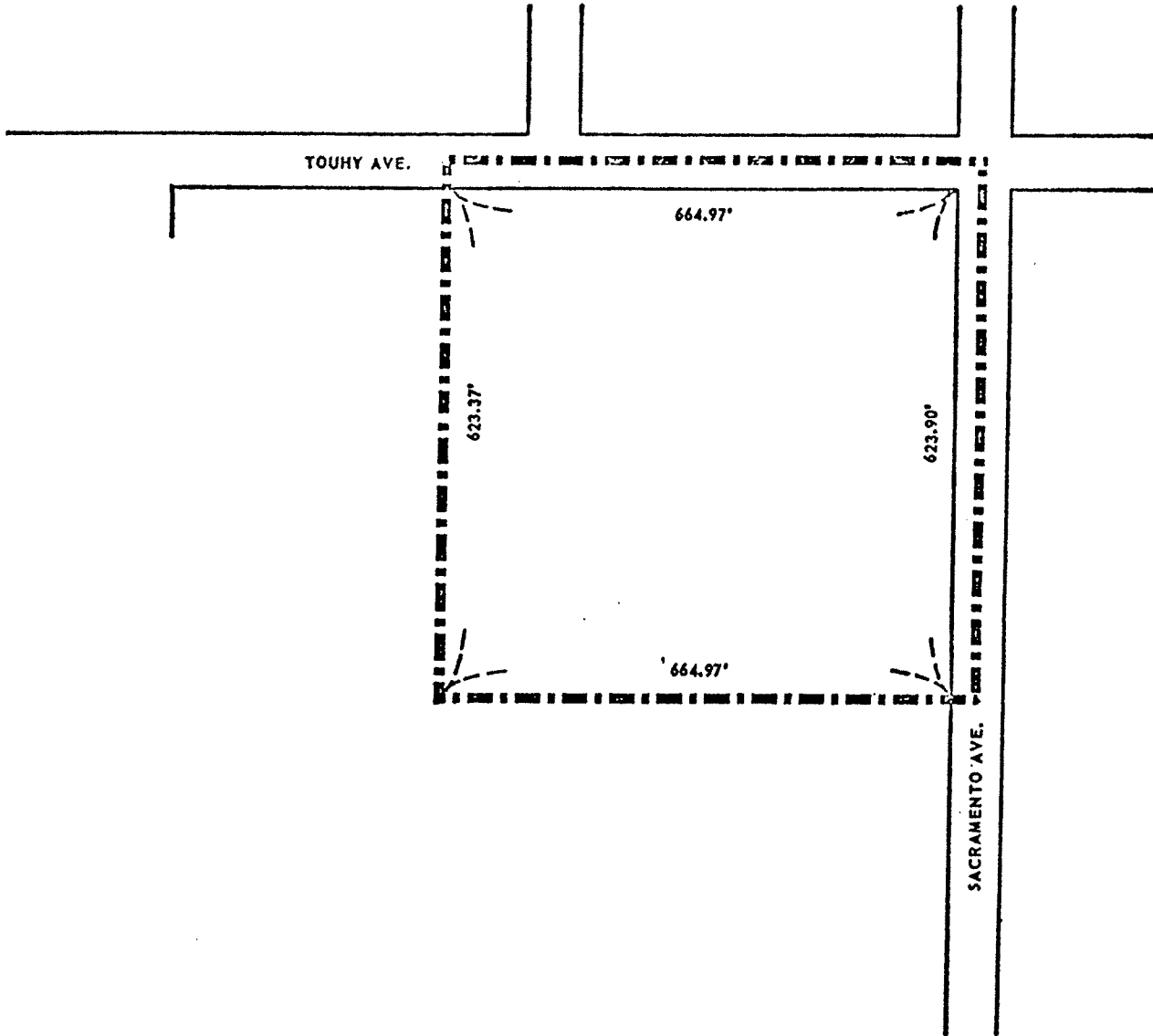
RESIDENTIAL PLANNED DEVELOPMENT

165

STATEMENTS

1. The area delineated hereon as "Residential Planned Development" is owned or controlled by the Jewish Community Centers of Chicago.
2. Off-street parking facilities, shall be provided in compliance with this Plan of Development, subject to the review of the Department of Streets and Sanitation and the approval of the Department of Development and Planning.
3. Off-street loading facilities shall be provided in compliance with this Plan of Development, subject to the review of the Department of Streets and Sanitation and the approval of the Department of Development and Planning.
4. All applicable official reviews, approvals or permits are required to be obtained by the Jewish Community Centers of Chicago.
5. Any dedication or vacation of streets and alleys or easements, or adjustments of right-of-way or consolidation or resub-division of parcels shall require a separate submittal on behalf of the Jewish Community Centers of Chicago and approval by the City Council.
6. Any service drives or any other ingress or egress shall be adequately designed and paved in accord with the regulations of the Department of Streets and Sanitation and in compliance with the Municipal Code of Chicago, to provide ingress and egress for motor vehicles, including emergency vehicles; there shall be no parking within such paved areas. Fire lanes shall be adequately designed and paved in compliance with the Municipal Code of Chicago and shall have a minimum width of 20 feet to provide ingress and egress for emergency vehicles. There shall be no parking within such paved areas.
7. The following uses shall be permitted within the area delineated hereon as "Residential Planned Development," community center and senior adult center, with health care facility, social service facility, related educational facilities, religious institution and related recreational facilities, one elevator apartment building for elderly housing, and related off-street parking.
8. Identification signs may be permitted within the area delineated hereon as Institutional Planned Development, subject to the review and approval of the Commissioner of the Department of Development and Planning.
9. The following information sets forth data concerning the property included in said Residential Planned Development and data concerning a generalized land use plan (site plan) illustrating the development of said property in accordance with the intent and purpose of the Chicago Zoning Ordinance.
10. The Plan of Development hereby attached shall be subject to the "Rules, Regulations and Procedures in Relation to Planned Development", as adopted by the Commissioner of the Department of Development and Planning.

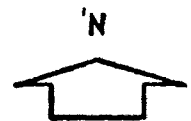
RESIDENTIAL PLANNED DEVELOPMENT
PROPERTY LINE MAP & RIGHT OF WAY ADJUSTMENTS



■■■■■ PLANNED DEVELOPMENT BOUNDARY

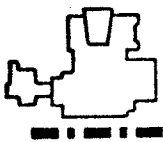
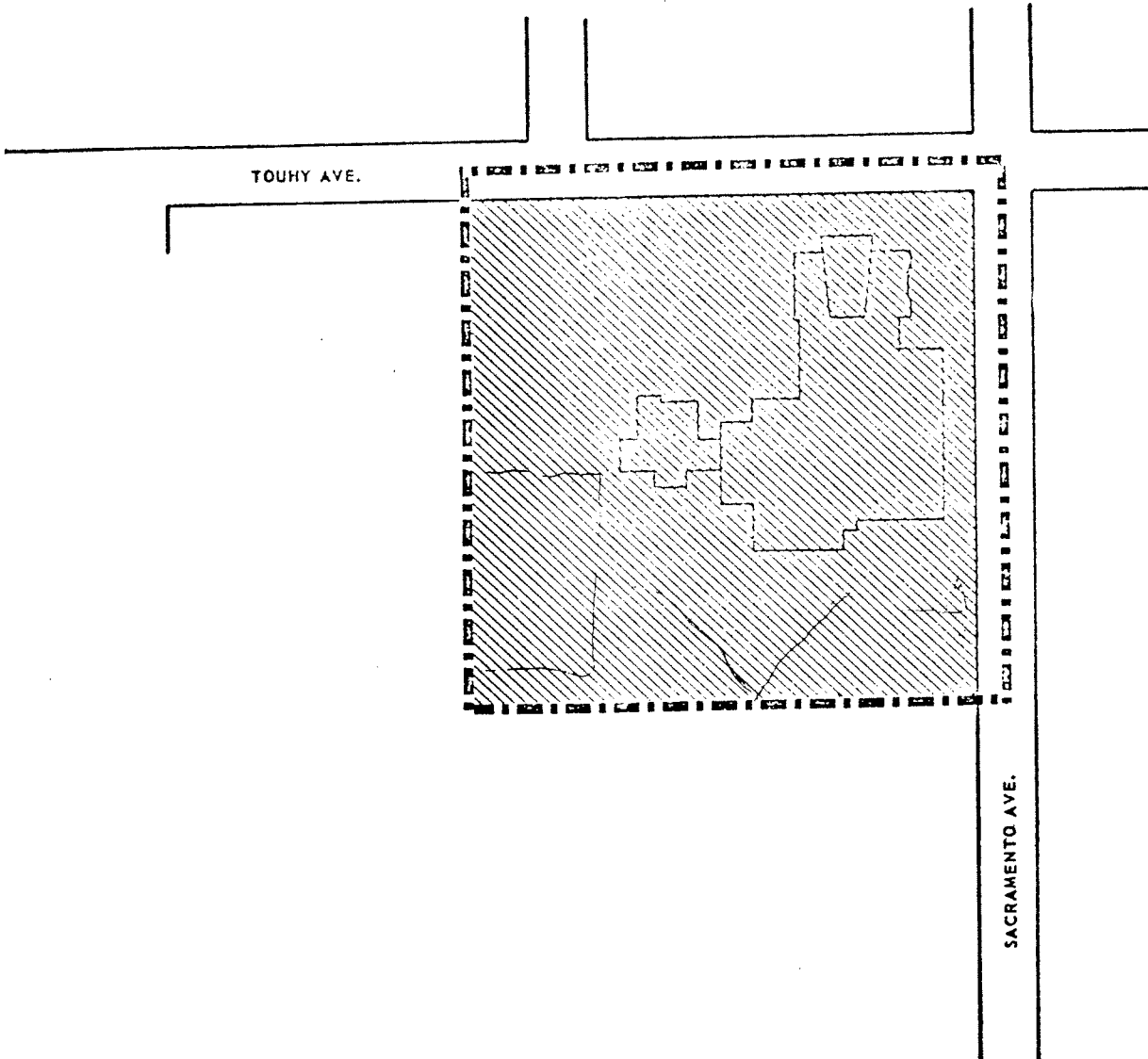
APPLICANT; JEWISH COMMUNITY CENTERS OF CHICAGO

DATE; DECEMBER 22, 1976



SCALE; 1 INCH = 200 FT.

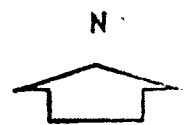
RESIDENTIAL PLANNED DEVELOPMENT
GENERALIZED LAND USE MAP



EXISTING STRUCTURE
RESIDENTIAL PLANNED DEVELOPMENT



COMMUNITY CENTER AND SENIOR ADULT CENTER, WITH HEALTH CARE FACILITY, SOCIAL SERVICE FACILITY, RELATED EDUCATIONAL FACILITIES, RELIGIOUS INSTITUTION AND RELATED RECREATIONAL FACILITIES, ONE ELEVATOR APARTMENT BUILDING FOR ELDERLY HOUSING, AND RELATED OFF STREET PARKING.



APPLICANT; JEWISH COMMUNITY CENTERS OF CHICAGO
DATE; DECEMBER 22, 1976

SCALE: 1 INCH = 200 FT.

