

PD 1246

Table of Contents

06/25/2014 PD Adoption	2
Ordinance	2
Statements	2
Bulk Table	5
Exhibits	6

18000

*Reclassification Of Area Shown On Map No. 1-G.
(As Amended)*

(Application No. 18000)

(Common Address: 1212 -- 1236 W. Madison St. And 1 -- 9 N. Elizabeth St.)

[SO2014-2337]

RBPD 1246

Be It Ordained by the City Council of the City of Chicago:

SECTION 1. That the Chicago Zoning Ordinance be amended by changing all of the C1-3 Neighborhood Commercial District and C2-3 Motor Vehicle-Related Commercial District symbols and indications as shown on Map Number 1-G in the area bounded by:

the public alley next south of and parallel to West Washington Boulevard; a line approximately 257.09 feet east of and parallel to North Elizabeth Street; West Madison Street; North Elizabeth Street; the public alley next north of and parallel to West Madison Street; and a line approximately 106.56 feet east of and parallel to North Elizabeth Street,

to those of a Residential Business Planned Development.

SECTION 2. This ordinance shall be in force and effect from and after its passage.

Plan of Development Statements attached to this ordinance read as follows.

Residential-Business Planned Development No. 1246.

Planned Development Statements.

1. The area delineated herein as Planned Development Number 1246 ("Planned Development") consists of approximately 40,931 net square feet of property which is depicted on the attached Planned Development Boundary and Property Line Map ("Property"). The applicant, Chicago Title Land Trust Company, as Trustee under Trust Agreement dated December 12, 2012 and known as Trust Number 8002360838, is the owner of the Property.
2. The requirements, obligations and conditions contained within this Planned Development shall be binding upon the applicant, its successors and assigns and, if different than the applicant, the legal titleholders and any ground lessors. All rights granted hereunder to the applicant shall inure to the benefit of the applicant's successors and assigns and, if different than the applicant, the legal titleholder and any ground lessors. Furthermore, pursuant to the requirements of Section 17-8-0400 of the Chicago Zoning Ordinance, the Property, at the time of application for amendments,

modifications or changes (administrative, legislative or otherwise) to this Planned Development are made, shall be under single ownership or designated control. Single designated control is defined in Section 17-8-0400 of the Zoning Ordinance in effect as of the date of this Planned Development.

3. All applicable official reviews, approvals or permits are required to be obtained by the applicant or its successors, assignees or grantees. Any dedication or vacation of streets or alleys or grants of easements or any adjustment of the right-of-way shall require a separate submittal to the Department of Transportation on behalf of the applicant or its successors, assigns or grantees.

Any requests for grants of privilege, or any items encroaching on the public way, shall be in compliance with the plans.

Ingress or egress shall be pursuant to the plans and may be subject to the review and approval of the Departments of Planning and Development and Transportation. Closure of all or any public street or alley during demolition or construction shall be subject to the review and approval of the Department of Transportation.

All work proposed in the public way must be designed and constructed in accordance with the Department of Transportation Construction Standards for Work in the Public Way and in compliance with the Municipal Code of the City of Chicago. Prior to the issuance of any Part II Approval, the submitted plans must be approved by the Department of Transportation.

4. This plan of development consists of 15 statements, a Bulk Regulations and Data Table, and the following plans prepared by PappageorgeHaymes Partners Ltd. and dated June 19, 2014 (collectively, the "Plans"): Existing Zoning and Land-Use Map, Planned Development Boundary and Property Line Map, Site Plan, Landscape Plan, Green Roof Plan, Ground Floor Plan, Madison Street (South Elevation), Elizabeth Street (West) Elevations, Public Alley (North) Elevation I, and Public Alley (North) Elevation II. Full-sized copies of the Plans are on file with the Department of Planning and Development ("DPD"). In any instance where a provision of this Planned Development conflicts with the Chicago Building Code, the Building Code shall control. This Planned Development conforms to the intent and purpose of the Zoning Ordinance, and all requirements thereto, and satisfies the established criteria for approval as a Planned Development. In case of a conflict between the terms of this Planned Development ordinance and the Zoning Ordinance, this Planned Development ordinance shall control.
5. The following uses shall be permitted in this Planned Development: artist work or sales space; day care; dry cleaner; eating and drinking establishments; food and beverage retail sales (provided any sale of liquor shall be accessory only); financial services; general retail sales; offices; participant sports and recreation (indoor); personal services; multi-family dwelling units above the ground floor; and accessory parking.

6. On-premises signs and temporary signs, such as construction and marketing signs, shall be permitted within the Planned Development, subject to the review and approval by the Department of Planning and Development. Off-premises signs are prohibited within the boundary of the Planned Development.
7. For purposes of height measurement, the definitions in the Zoning Ordinance shall apply. The height of any building shall also be subject to height limitations, if any, established by the Federal Aviation Administration.
8. The maximum permitted Floor Area Ratio ("FAR") for the site shall be in accordance with the attached Bulk Regulations and Data Table. For the purposes of FAR calculations and measurements, the definitions in the Zoning Ordinance shall apply. The permitted overall FAR identified in the Bulk Regulations Table has been determined using a Net Site Area of 40,931 square feet.
9. Upon review and determination, "Part II Review", pursuant to Section 17-13-0610 of the Zoning Ordinance, a Part II Review fee shall be assessed by DPD. The fee, as determined by staff at the time, is final and binding on the applicant and must be paid to the Department of Revenue prior to the issuance of any Part II Approval.
10. The plans shall be in substantial conformance with the Landscape Ordinance and any other corresponding regulations and guidelines. Final landscape plan review and approval will be by DPD. Any interim reviews associated with site plan review or Part II Reviews, are conditional until final Part II Approval.
11. The applicant shall comply with Rules and Regulations for the Maintenance of Stockpiles promulgated by the Commissioners of the Departments of Streets and Sanitation, Fleet and Facility Management and Buildings, under Section 13-32-125 of the Municipal Code, or any other provision of that Code.
12. The terms and conditions of development under this Planned Development ordinance may be modified administratively, pursuant to Section 17-13-0611-A of the Zoning Ordinance by the Zoning Administrator upon the application for such a modification by the applicant, its successors and assigns and, if different than the applicant, the legal titleholders and any ground lessors.
13. The applicant acknowledges that it is in the public interest to design, construct and maintain the project in a manner which promotes, enables and maximizes universal access throughout the Property. Plans for all buildings and improvements on the Property shall be reviewed and approved by the Mayor's Office for People with Disabilities to ensure compliance with all applicable laws and regulations related to access for persons with disabilities and to promote the highest standard of accessibility.
14. The applicant acknowledges that it is in the public interest to design, construct, renovate and maintain all buildings in a manner that provides healthier indoor environments, reduces operating costs and conserves energy and natural resources. The applicant shall seek LEED certification and a green roof of not less than 50 percent of the net roof area shall be provided, for the proposed building addition.

- 15. This Planned Development shall be governed by Section 17-13-0612 of the Zoning Ordinance. Should this Planned Development ordinance lapse, the Commissioner of DPD shall initiate a zoning map amendment to rezone the Property to the C1-3 Neighborhood Commercial District.

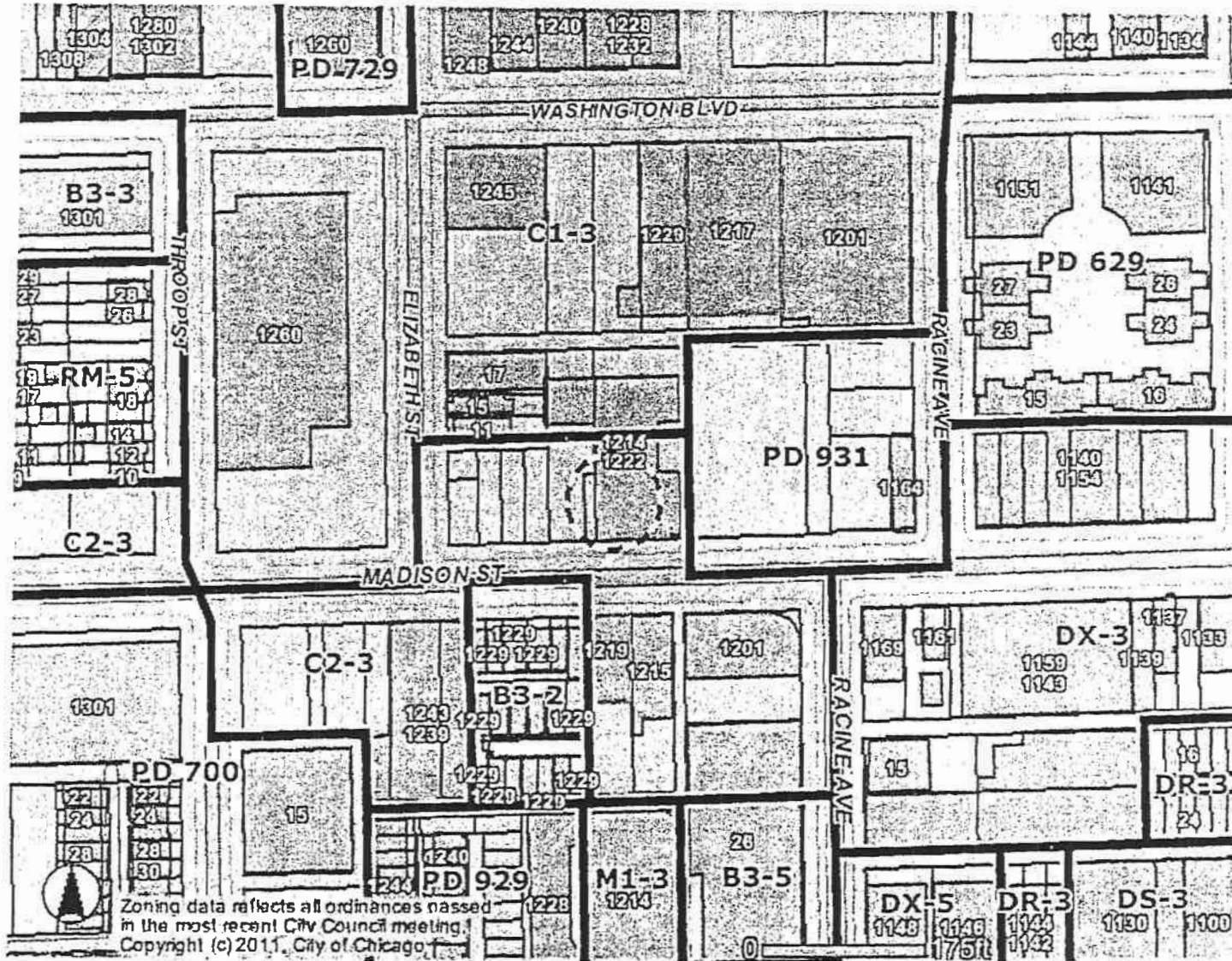
[Existing Zoning Map; Existing Land-Use Map, Planned Development Boundary and Property Line Map; Site Plan, Ground Level Plan; Landscape Plan; Green Roof Plan; and Building Elevations referred to in these Plan of Development Statements printed on pages 84196 through 84206 of this *Journal*.]

Bulk Regulations and Data Table referred to in these Plan of Development Statements reads as follows:

Residential-Business Planned Development No. 1246.

Bulk Regulations And Data Table.

Gross Site Area (square feet):	56,434
Area of Public Rights-of-Way (square feet):	15,503
Net Site Area (square feet):	40,931
Maximum Floor Area Ratio:	3.00
Maximum Number of Dwelling Units:	101
Minimum Off-Street Parking Spaces:	86
Minimum Bicycle Parking Spaces:	1 per 2 auto spaces
Minimum Off-Street Loading Spaces:	1 (10 feet x 25 feet)
Maximum Building Height:	
Proposed Building Addition:	63 feet
(Existing Building:	68 feet, 6 inches)
Minimum Setbacks:	In substantial conformance with the plans



Zoning data reflects all ordinances passed in the most recent City Council meeting. Copyright (c) 2011, City of Chicago.

APPLICANT: CHICAGO TITLE LAND TRUST COMPANY,
as Trustee under Trust Agreement dated December 12, 2012
and known as Trust No. 8002360838

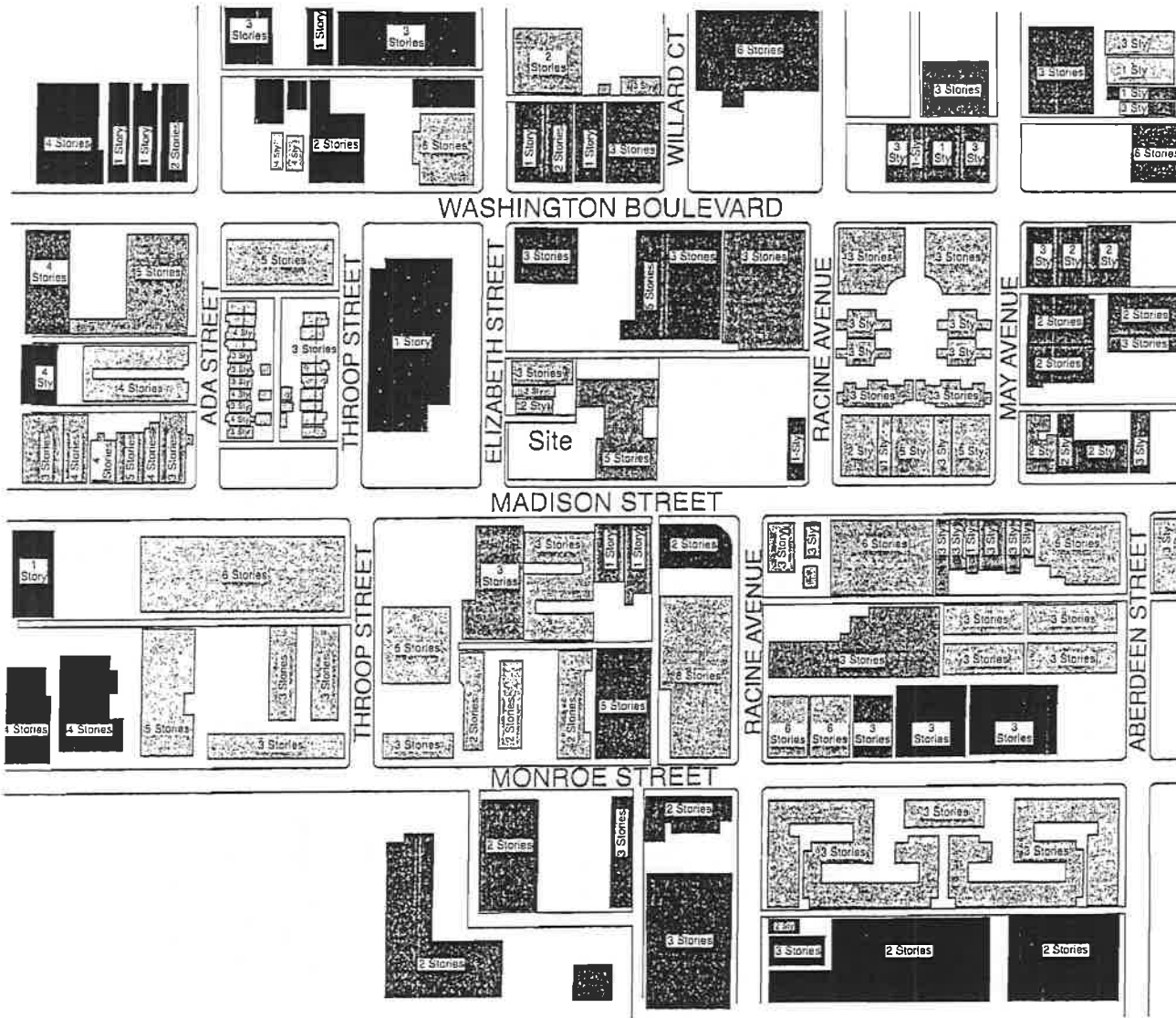
ADDRESS: 1212-1236 W. Madison Street
1-9 N. Elizabeth Street, Chicago, IL 60607

DATE INTRODUCED: April 2nd, 2014





CHICAGO PLAN COMMISSION: June 19th, 2014

Existing Zoning Map





KEY

-  Existing Residential
-  Existing Mixed-Use Residential & Commercial
-  Existing Commercial
-  Existing Manufacturing

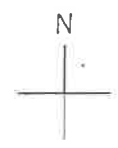
APPLICANT: CHICAGO TITLE LAND TRUST COMPANY,
as Trustee under Trust Agreement dated December 12, 2012
and known as Trust No. 8002360838

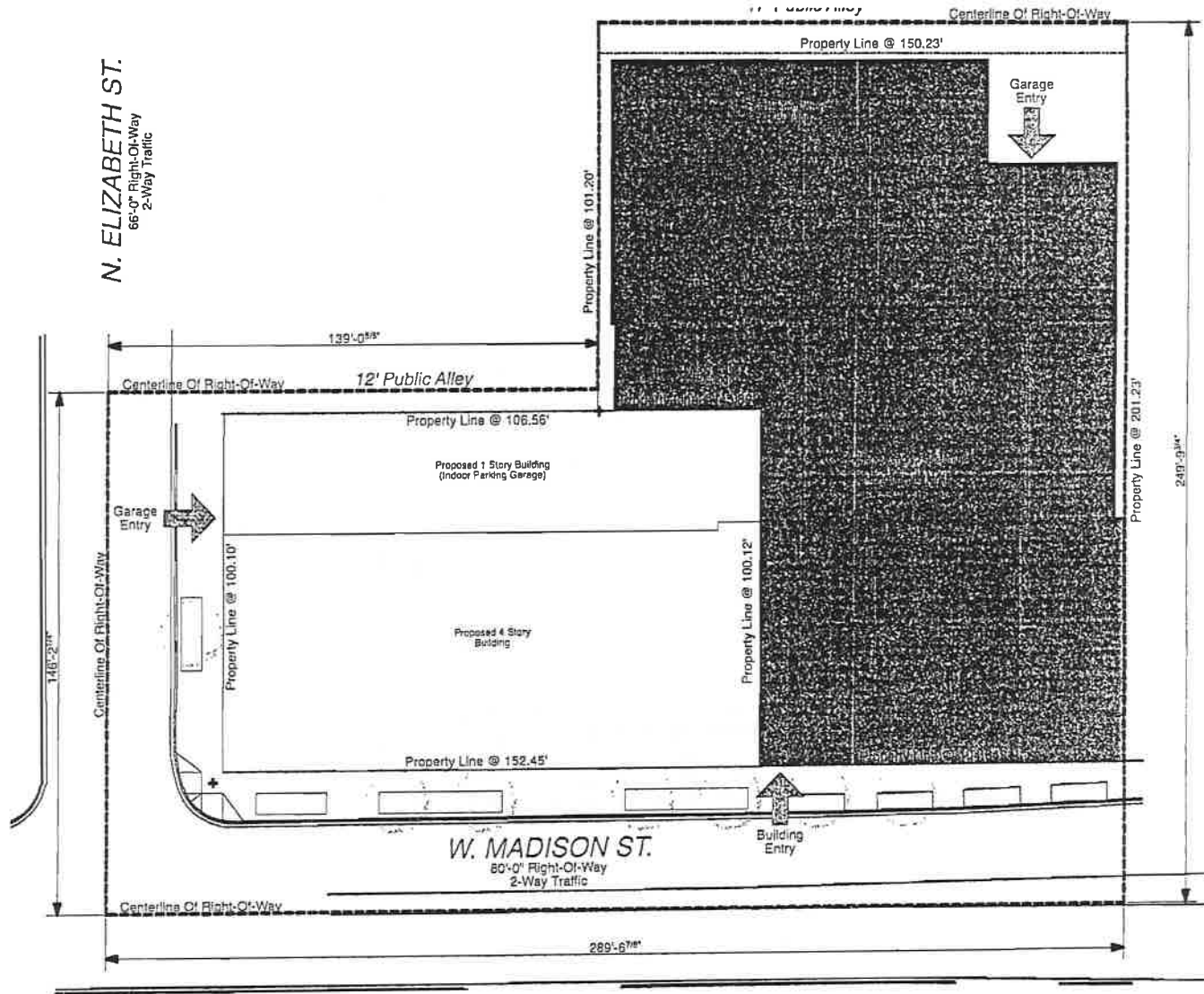
ADDRESS: 1212-1236 W. Madison Street
1-9 N. Elizabeth Street, Chicago, IL 60607

DATE INTRODUCED: April 2nd, 2014

CHICAGO PLAN COMMISSION: June 19th, 2014

Existing Land Use Map





APPLICANT: CHICAGO TITLE LAND TRUST COMPANY,
as Trustee under Trust Agreement dated December 12, 2012
and known as Trust No. 8002360838

ADDRESS: 1212-1236 W. Madison Street
1-9 N. Elizabeth Street, Chicago, IL 60607

DATE INTRODUCED: April 2nd, 2014

CHICAGO PLAN COMMISSION: June 19th, 2014

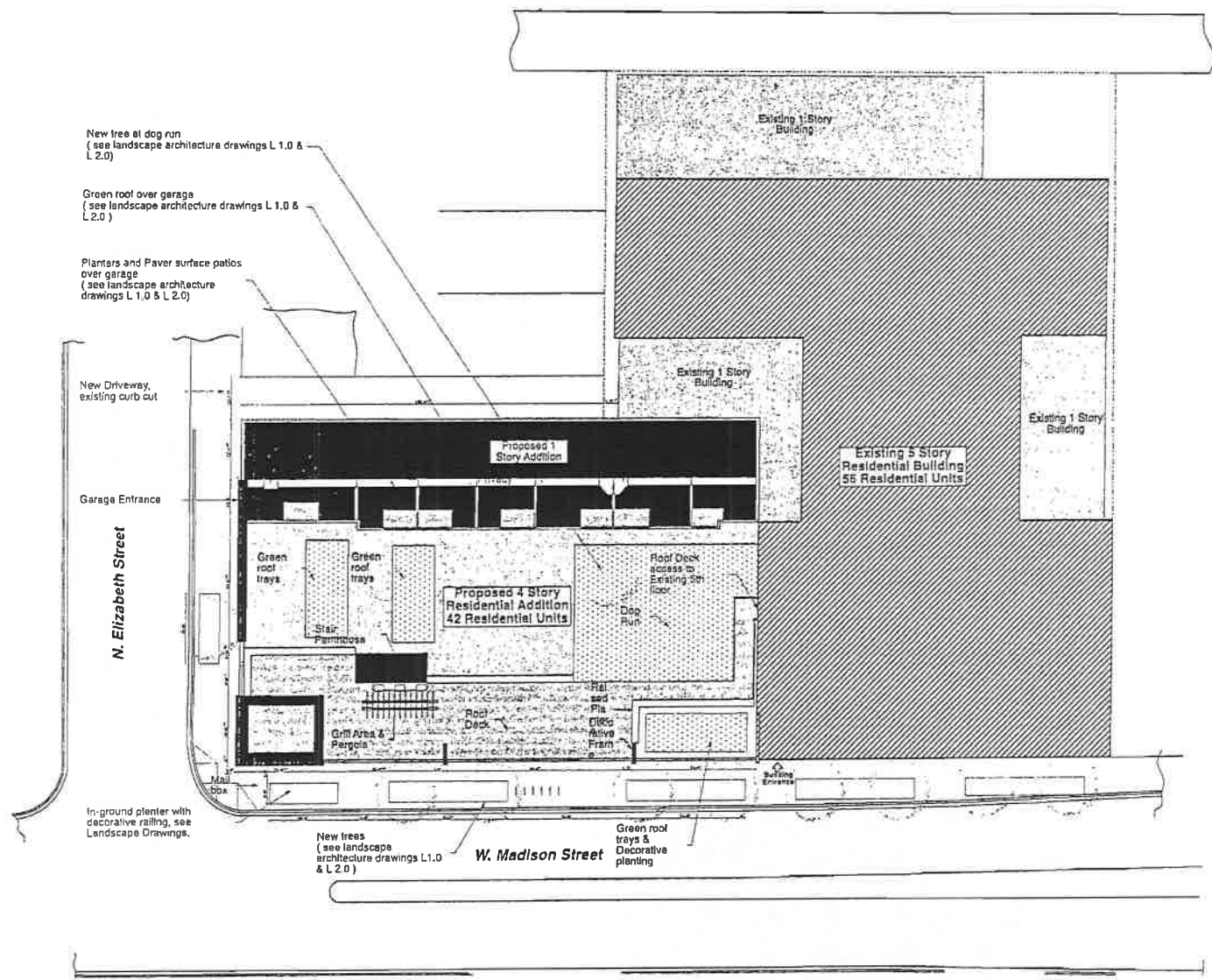
**Planned Development Boundary
And Property Line Map**



6/25/2014

REPORTS OF COMMITTEES

84199



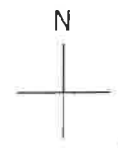
APPLICANT: CHICAGO TITLE LAND TRUST COMPANY,
as Trustee under Trust Agreement dated December 12, 2012
and known as Trust No. 8002360838

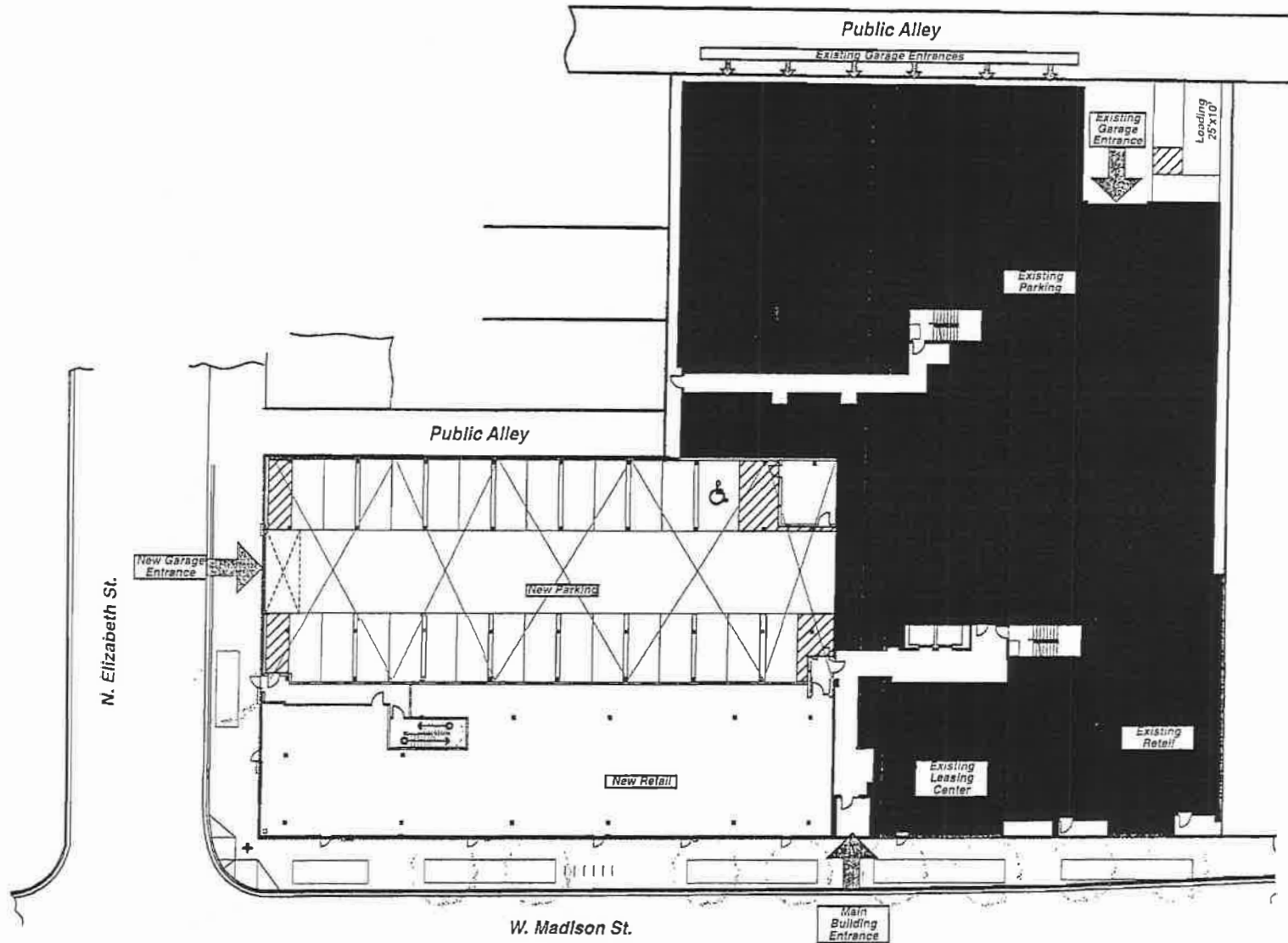
ADDRESS: 1212-1236 W. Madison Street
1-9 N. Elizabeth Street, Chicago, IL 60607

DATE INTRODUCED: April 2nd, 2014

CHICAGO PLAN COMMISSION: June 19th, 2014

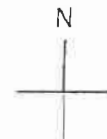
Site Plan





APPLICANT: CHICAGO TITLE LAND TRUST COMPANY,
 as Trustee under Trust Agreement dated December 12, 2012
 and known as Trust No. 8002360838
 ADDRESS: 1212-1236 W. Madison Street
 1-9 N. Elizabeth Street, Chicago, IL 60607
 DATE INTRODUCED: April 2nd, 2014
 CHICAGO PLAN COMMISSION: June 19th, 2014

Ground Level Plan



GROUND LEVEL LANDSCAPE PLANT LIST

CODE	COMMON NAME	COMMON NAME	SIZE	QUANTITY	ADDITIONAL NOTES
001	ORNAMENTAL TREES	EMERALD ARBOREUM CORNUS	1" CALIPER	3	BRANCHED UP 1/2"
002	ORNAMENTAL TREES	EMERALD ARBOREUM CORNUS	1" CALIPER	3	BRANCHED UP 1/2"
003	ORNAMENTAL TREES	EMERALD ARBOREUM CORNUS	1" CALIPER	3	BRANCHED UP 1/2"
004	ORNAMENTAL TREES	EMERALD ARBOREUM CORNUS	1" CALIPER	3	BRANCHED UP 1/2"
005	ORNAMENTAL TREES	EMERALD ARBOREUM CORNUS	1" CALIPER	3	BRANCHED UP 1/2"
006	ORNAMENTAL TREES	EMERALD ARBOREUM CORNUS	1" CALIPER	3	BRANCHED UP 1/2"
007	ORNAMENTAL TREES	EMERALD ARBOREUM CORNUS	1" CALIPER	3	BRANCHED UP 1/2"
008	ORNAMENTAL TREES	EMERALD ARBOREUM CORNUS	1" CALIPER	3	BRANCHED UP 1/2"
009	ORNAMENTAL TREES	EMERALD ARBOREUM CORNUS	1" CALIPER	3	BRANCHED UP 1/2"
010	ORNAMENTAL TREES	EMERALD ARBOREUM CORNUS	1" CALIPER	3	BRANCHED UP 1/2"
011	ORNAMENTAL TREES	EMERALD ARBOREUM CORNUS	1" CALIPER	3	BRANCHED UP 1/2"
012	ORNAMENTAL TREES	EMERALD ARBOREUM CORNUS	1" CALIPER	3	BRANCHED UP 1/2"
013	ORNAMENTAL TREES	EMERALD ARBOREUM CORNUS	1" CALIPER	3	BRANCHED UP 1/2"
014	ORNAMENTAL TREES	EMERALD ARBOREUM CORNUS	1" CALIPER	3	BRANCHED UP 1/2"
015	ORNAMENTAL TREES	EMERALD ARBOREUM CORNUS	1" CALIPER	3	BRANCHED UP 1/2"
016	ORNAMENTAL TREES	EMERALD ARBOREUM CORNUS	1" CALIPER	3	BRANCHED UP 1/2"
017	ORNAMENTAL TREES	EMERALD ARBOREUM CORNUS	1" CALIPER	3	BRANCHED UP 1/2"
018	ORNAMENTAL TREES	EMERALD ARBOREUM CORNUS	1" CALIPER	3	BRANCHED UP 1/2"
019	ORNAMENTAL TREES	EMERALD ARBOREUM CORNUS	1" CALIPER	3	BRANCHED UP 1/2"
020	ORNAMENTAL TREES	EMERALD ARBOREUM CORNUS	1" CALIPER	3	BRANCHED UP 1/2"
021	ORNAMENTAL TREES	EMERALD ARBOREUM CORNUS	1" CALIPER	3	BRANCHED UP 1/2"
022	ORNAMENTAL TREES	EMERALD ARBOREUM CORNUS	1" CALIPER	3	BRANCHED UP 1/2"
023	ORNAMENTAL TREES	EMERALD ARBOREUM CORNUS	1" CALIPER	3	BRANCHED UP 1/2"
024	ORNAMENTAL TREES	EMERALD ARBOREUM CORNUS	1" CALIPER	3	BRANCHED UP 1/2"
025	ORNAMENTAL TREES	EMERALD ARBOREUM CORNUS	1" CALIPER	3	BRANCHED UP 1/2"
026	ORNAMENTAL TREES	EMERALD ARBOREUM CORNUS	1" CALIPER	3	BRANCHED UP 1/2"
027	ORNAMENTAL TREES	EMERALD ARBOREUM CORNUS	1" CALIPER	3	BRANCHED UP 1/2"
028	ORNAMENTAL TREES	EMERALD ARBOREUM CORNUS	1" CALIPER	3	BRANCHED UP 1/2"
029	ORNAMENTAL TREES	EMERALD ARBOREUM CORNUS	1" CALIPER	3	BRANCHED UP 1/2"
030	ORNAMENTAL TREES	EMERALD ARBOREUM CORNUS	1" CALIPER	3	BRANCHED UP 1/2"
031	ORNAMENTAL TREES	EMERALD ARBOREUM CORNUS	1" CALIPER	3	BRANCHED UP 1/2"
032	ORNAMENTAL TREES	EMERALD ARBOREUM CORNUS	1" CALIPER	3	BRANCHED UP 1/2"
033	ORNAMENTAL TREES	EMERALD ARBOREUM CORNUS	1" CALIPER	3	BRANCHED UP 1/2"
034	ORNAMENTAL TREES	EMERALD ARBOREUM CORNUS	1" CALIPER	3	BRANCHED UP 1/2"
035	ORNAMENTAL TREES	EMERALD ARBOREUM CORNUS	1" CALIPER	3	BRANCHED UP 1/2"
036	ORNAMENTAL TREES	EMERALD ARBOREUM CORNUS	1" CALIPER	3	BRANCHED UP 1/2"
037	ORNAMENTAL TREES	EMERALD ARBOREUM CORNUS	1" CALIPER	3	BRANCHED UP 1/2"
038	ORNAMENTAL TREES	EMERALD ARBOREUM CORNUS	1" CALIPER	3	BRANCHED UP 1/2"
039	ORNAMENTAL TREES	EMERALD ARBOREUM CORNUS	1" CALIPER	3	BRANCHED UP 1/2"
040	ORNAMENTAL TREES	EMERALD ARBOREUM CORNUS	1" CALIPER	3	BRANCHED UP 1/2"
041	ORNAMENTAL TREES	EMERALD ARBOREUM CORNUS	1" CALIPER	3	BRANCHED UP 1/2"
042	ORNAMENTAL TREES	EMERALD ARBOREUM CORNUS	1" CALIPER	3	BRANCHED UP 1/2"
043	ORNAMENTAL TREES	EMERALD ARBOREUM CORNUS	1" CALIPER	3	BRANCHED UP 1/2"
044	ORNAMENTAL TREES	EMERALD ARBOREUM CORNUS	1" CALIPER	3	BRANCHED UP 1/2"
045	ORNAMENTAL TREES	EMERALD ARBOREUM CORNUS	1" CALIPER	3	BRANCHED UP 1/2"
046	ORNAMENTAL TREES	EMERALD ARBOREUM CORNUS	1" CALIPER	3	BRANCHED UP 1/2"
047	ORNAMENTAL TREES	EMERALD ARBOREUM CORNUS	1" CALIPER	3	BRANCHED UP 1/2"
048	ORNAMENTAL TREES	EMERALD ARBOREUM CORNUS	1" CALIPER	3	BRANCHED UP 1/2"
049	ORNAMENTAL TREES	EMERALD ARBOREUM CORNUS	1" CALIPER	3	BRANCHED UP 1/2"
050	ORNAMENTAL TREES	EMERALD ARBOREUM CORNUS	1" CALIPER	3	BRANCHED UP 1/2"
051	ORNAMENTAL TREES	EMERALD ARBOREUM CORNUS	1" CALIPER	3	BRANCHED UP 1/2"
052	ORNAMENTAL TREES	EMERALD ARBOREUM CORNUS	1" CALIPER	3	BRANCHED UP 1/2"
053	ORNAMENTAL TREES	EMERALD ARBOREUM CORNUS	1" CALIPER	3	BRANCHED UP 1/2"
054	ORNAMENTAL TREES	EMERALD ARBOREUM CORNUS	1" CALIPER	3	BRANCHED UP 1/2"
055	ORNAMENTAL TREES	EMERALD ARBOREUM CORNUS	1" CALIPER	3	BRANCHED UP 1/2"
056	ORNAMENTAL TREES	EMERALD ARBOREUM CORNUS	1" CALIPER	3	BRANCHED UP 1/2"
057	ORNAMENTAL TREES	EMERALD ARBOREUM CORNUS	1" CALIPER	3	BRANCHED UP 1/2"
058	ORNAMENTAL TREES	EMERALD ARBOREUM CORNUS	1" CALIPER	3	BRANCHED UP 1/2"
059	ORNAMENTAL TREES	EMERALD ARBOREUM CORNUS	1" CALIPER	3	BRANCHED UP 1/2"
060	ORNAMENTAL TREES	EMERALD ARBOREUM CORNUS	1" CALIPER	3	BRANCHED UP 1/2"
061	ORNAMENTAL TREES	EMERALD ARBOREUM CORNUS	1" CALIPER	3	BRANCHED UP 1/2"
062	ORNAMENTAL TREES	EMERALD ARBOREUM CORNUS	1" CALIPER	3	BRANCHED UP 1/2"
063	ORNAMENTAL TREES	EMERALD ARBOREUM CORNUS	1" CALIPER	3	BRANCHED UP 1/2"
064	ORNAMENTAL TREES	EMERALD ARBOREUM CORNUS	1" CALIPER	3	BRANCHED UP 1/2"
065	ORNAMENTAL TREES	EMERALD ARBOREUM CORNUS	1" CALIPER	3	BRANCHED UP 1/2"
066	ORNAMENTAL TREES	EMERALD ARBOREUM CORNUS	1" CALIPER	3	BRANCHED UP 1/2"
067	ORNAMENTAL TREES	EMERALD ARBOREUM CORNUS	1" CALIPER	3	BRANCHED UP 1/2"
068	ORNAMENTAL TREES	EMERALD ARBOREUM CORNUS	1" CALIPER	3	BRANCHED UP 1/2"
069	ORNAMENTAL TREES	EMERALD ARBOREUM CORNUS	1" CALIPER	3	BRANCHED UP 1/2"
070	ORNAMENTAL TREES	EMERALD ARBOREUM CORNUS	1" CALIPER	3	BRANCHED UP 1/2"
071	ORNAMENTAL TREES	EMERALD ARBOREUM CORNUS	1" CALIPER	3	BRANCHED UP 1/2"
072	ORNAMENTAL TREES	EMERALD ARBOREUM CORNUS	1" CALIPER	3	BRANCHED UP 1/2"
073	ORNAMENTAL TREES	EMERALD ARBOREUM CORNUS	1" CALIPER	3	BRANCHED UP 1/2"
074	ORNAMENTAL TREES	EMERALD ARBOREUM CORNUS	1" CALIPER	3	BRANCHED UP 1/2"
075	ORNAMENTAL TREES	EMERALD ARBOREUM CORNUS	1" CALIPER	3	BRANCHED UP 1/2"
076	ORNAMENTAL TREES	EMERALD ARBOREUM CORNUS	1" CALIPER	3	BRANCHED UP 1/2"
077	ORNAMENTAL TREES	EMERALD ARBOREUM CORNUS	1" CALIPER	3	BRANCHED UP 1/2"
078	ORNAMENTAL TREES	EMERALD ARBOREUM CORNUS	1" CALIPER	3	BRANCHED UP 1/2"
079	ORNAMENTAL TREES	EMERALD ARBOREUM CORNUS	1" CALIPER	3	BRANCHED UP 1/2"
080	ORNAMENTAL TREES	EMERALD ARBOREUM CORNUS	1" CALIPER	3	BRANCHED UP 1/2"
081	ORNAMENTAL TREES	EMERALD ARBOREUM CORNUS	1" CALIPER	3	BRANCHED UP 1/2"
082	ORNAMENTAL TREES	EMERALD ARBOREUM CORNUS	1" CALIPER	3	BRANCHED UP 1/2"
083	ORNAMENTAL TREES	EMERALD ARBOREUM CORNUS	1" CALIPER	3	BRANCHED UP 1/2"
084	ORNAMENTAL TREES	EMERALD ARBOREUM CORNUS	1" CALIPER	3	BRANCHED UP 1/2"
085	ORNAMENTAL TREES	EMERALD ARBOREUM CORNUS	1" CALIPER	3	BRANCHED UP 1/2"
086	ORNAMENTAL TREES	EMERALD ARBOREUM CORNUS	1" CALIPER	3	BRANCHED UP 1/2"
087	ORNAMENTAL TREES	EMERALD ARBOREUM CORNUS	1" CALIPER	3	BRANCHED UP 1/2"
088	ORNAMENTAL TREES	EMERALD ARBOREUM CORNUS	1" CALIPER	3	BRANCHED UP 1/2"
089	ORNAMENTAL TREES	EMERALD ARBOREUM CORNUS	1" CALIPER	3	BRANCHED UP 1/2"
090	ORNAMENTAL TREES	EMERALD ARBOREUM CORNUS	1" CALIPER	3	BRANCHED UP 1/2"
091	ORNAMENTAL TREES	EMERALD ARBOREUM CORNUS	1" CALIPER	3	BRANCHED UP 1/2"
092	ORNAMENTAL TREES	EMERALD ARBOREUM CORNUS	1" CALIPER	3	BRANCHED UP 1/2"
093	ORNAMENTAL TREES	EMERALD ARBOREUM CORNUS	1" CALIPER	3	BRANCHED UP 1/2"
094	ORNAMENTAL TREES	EMERALD ARBOREUM CORNUS	1" CALIPER	3	BRANCHED UP 1/2"
095	ORNAMENTAL TREES	EMERALD ARBOREUM CORNUS	1" CALIPER	3	BRANCHED UP 1/2"
096	ORNAMENTAL TREES	EMERALD ARBOREUM CORNUS	1" CALIPER	3	BRANCHED UP 1/2"
097	ORNAMENTAL TREES	EMERALD ARBOREUM CORNUS	1" CALIPER	3	BRANCHED UP 1/2"
098	ORNAMENTAL TREES	EMERALD ARBOREUM CORNUS	1" CALIPER	3	BRANCHED UP 1/2"
099	ORNAMENTAL TREES	EMERALD ARBOREUM CORNUS	1" CALIPER	3	BRANCHED UP 1/2"
100	ORNAMENTAL TREES	EMERALD ARBOREUM CORNUS	1" CALIPER	3	BRANCHED UP 1/2"

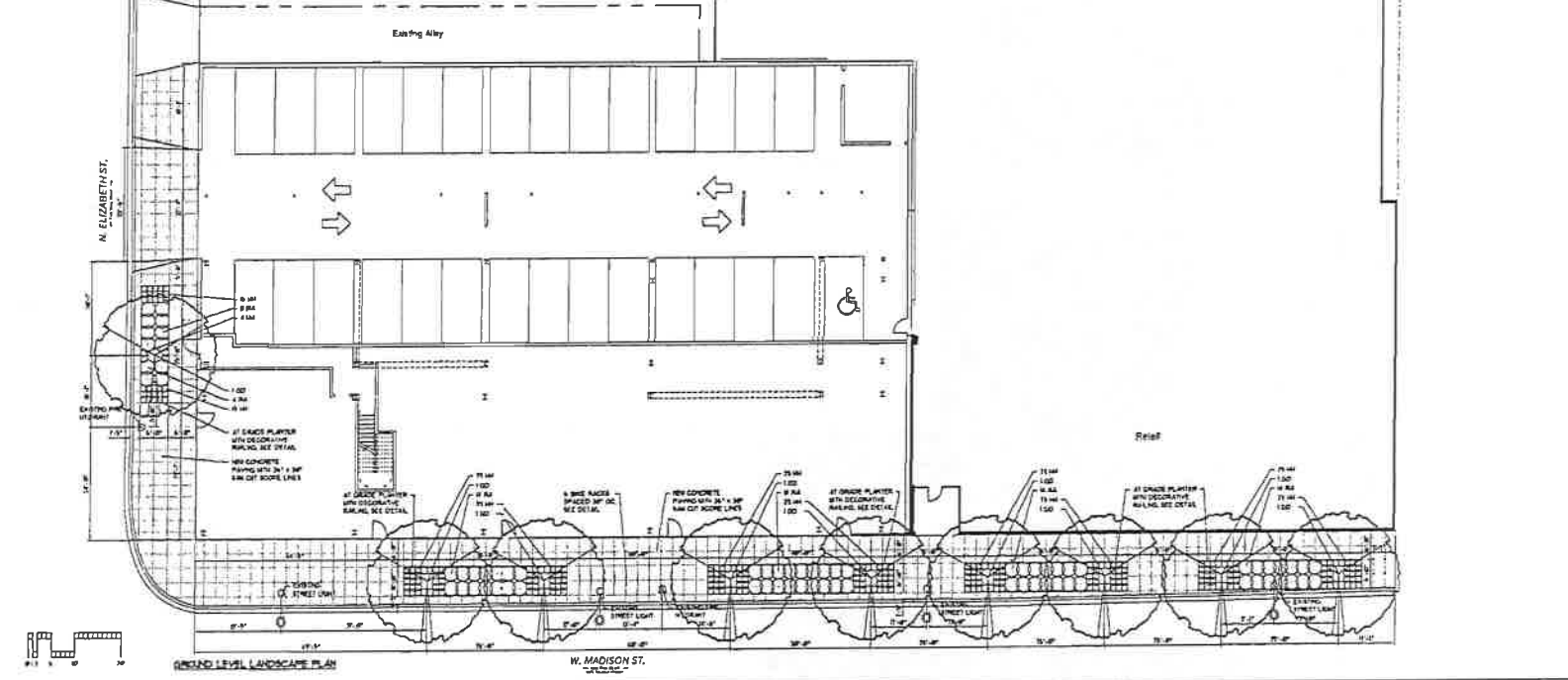
MAINTENANCE STATEMENT BY OWNER
 THE UNDERSIGNED ACKNOWLEDGE THAT THE LANDSCAPE PLANNING PLAN SHOWN ON THE ATTACHED LANDSCAPE PLANS FOR THE PROPERTY AT 1212-1236 W. MADISON STREET, CHICAGO, ILLINOIS, IS THE BEST OF HIS UNDERSIGNED APPLICANT'S KNOWLEDGE AND BELIEF TO BE MAINTAINED AND REPLACED AS REQUIRED BY CURRENT AND SUBSEQUENT ORDINANCES IN ACCORDANCE WITH THE REQUIREMENTS OF TITLE 16, CHAPTER 33 OF THE CHICAGO MUNICIPAL CODE, THE LANDSCAPING STANDARDS OF THE CHICAGO ZONING ORDINANCE, AND THE CODES TO THE CHICAGO LANDSCAPE ORDINANCE.

TREE PROTECTION STATEMENT BY OWNER
 EXISTING PERMITS AND SPECIAL UTILITY TRENCHES ARE TO BE PROTECTED WHILE THE PROJECT IS UNDER CONSTRUCTION AND WILL BE REPLACED BY CURRENT OR SUBSEQUENT OWNER'S DUTY.

PLAN PREPARATION STATEMENT BY LANDSCAPE ARCHITECT
 THE UNDERSIGNED LANDSCAPE ARCHITECT, IDENTIFIED BY THE TITLE OF LICENSE, ACKNOWLEDGES THAT THE LANDSCAPE PLANNING PLAN AND CONSTRUCTION DETAILS SHOWN ON THE ATTACHED LANDSCAPE PLANS FOR THE PROPERTY AT 1212-1236 W. MADISON STREET, CHICAGO, ILLINOIS, HAS BEEN PREPARED IN ACCORDANCE WITH THE REQUIREMENTS OF TITLE 16, CHAPTER 33 OF THE CHICAGO MUNICIPAL CODE, THE LANDSCAPING STANDARDS OF THE CHICAGO ZONING ORDINANCE, AND THE CODES TO THE CHICAGO LANDSCAPE ORDINANCE.

William J. [Signature]
 REGISTERED LANDSCAPE ARCHITECT 1/13/17M
 032

ESTIMATED TIME OF PLANTING INSTALLATION
 PENDING ANY DELAYS IN CONSTRUCTION, IT IS ESTIMATED THAT THE LANDSCAPE PLANTING WILL BE COMPLETED BY 9/1/14.



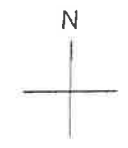
APPLICANT: CHICAGO TITLE LAND TRUST COMPANY, as Trustee under Trust Agreement dated December 12, 2012 and known as Trust No. 8002360838

ADDRESS: 1212-1236 W. Madison Street
 1-9 N. Elizabeth Street, Chicago, IL 60607

DATE INTRODUCED: April 2nd, 2014

CHICAGO PLAN COMMISSION: June 19th, 2014

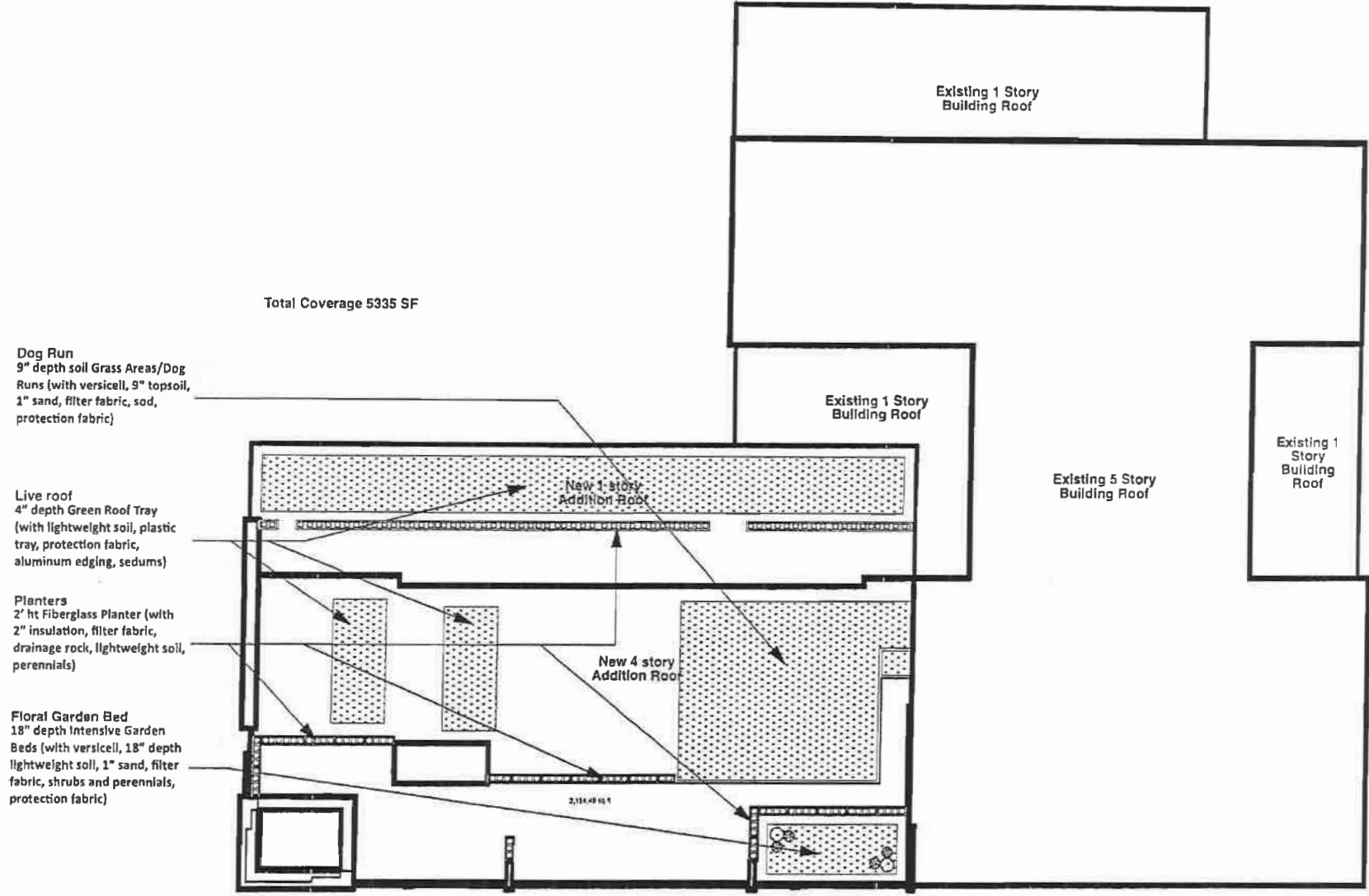
Landscape Plan



6/25/2014

REPORTS OF COMMITTEES

84201



Total Coverage 5335 SF

Dog Run
9" depth soil Grass Areas/Dog
Runs (with versicell, 9" topsoil,
1" sand, filter fabric, sod,
protection fabric)

Live roof
4" depth Green Roof Tray
(with lightweight soil, plastic
tray, protection fabric,
aluminum edging, sedums)

Planters
2' ht Fiberglass Planter (with
2" insulation, filter fabric,
drainage rock, lightweight soil,
perennials)

Floral Garden Bed
18" depth Intensive Garden
Beds (with versicell, 18" depth
lightweight soil, 1" sand, filter
fabric, shrubs and perennials,
protection fabric)

2,134.49 ft

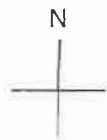
APPLICANT: CHICAGO TITLE LAND TRUST COMPANY,
as Trustee under Trust Agreement dated December 12, 2012
and known as Trust No. 8002360838

ADDRESS: 1212-1236 W. Madison Street
1-9 N. Elizabeth Street, Chicago, IL 60607

DATE INTRODUCED: April 2nd, 2014

CHICAGO PLAN COMMISSION: June 19th, 2014

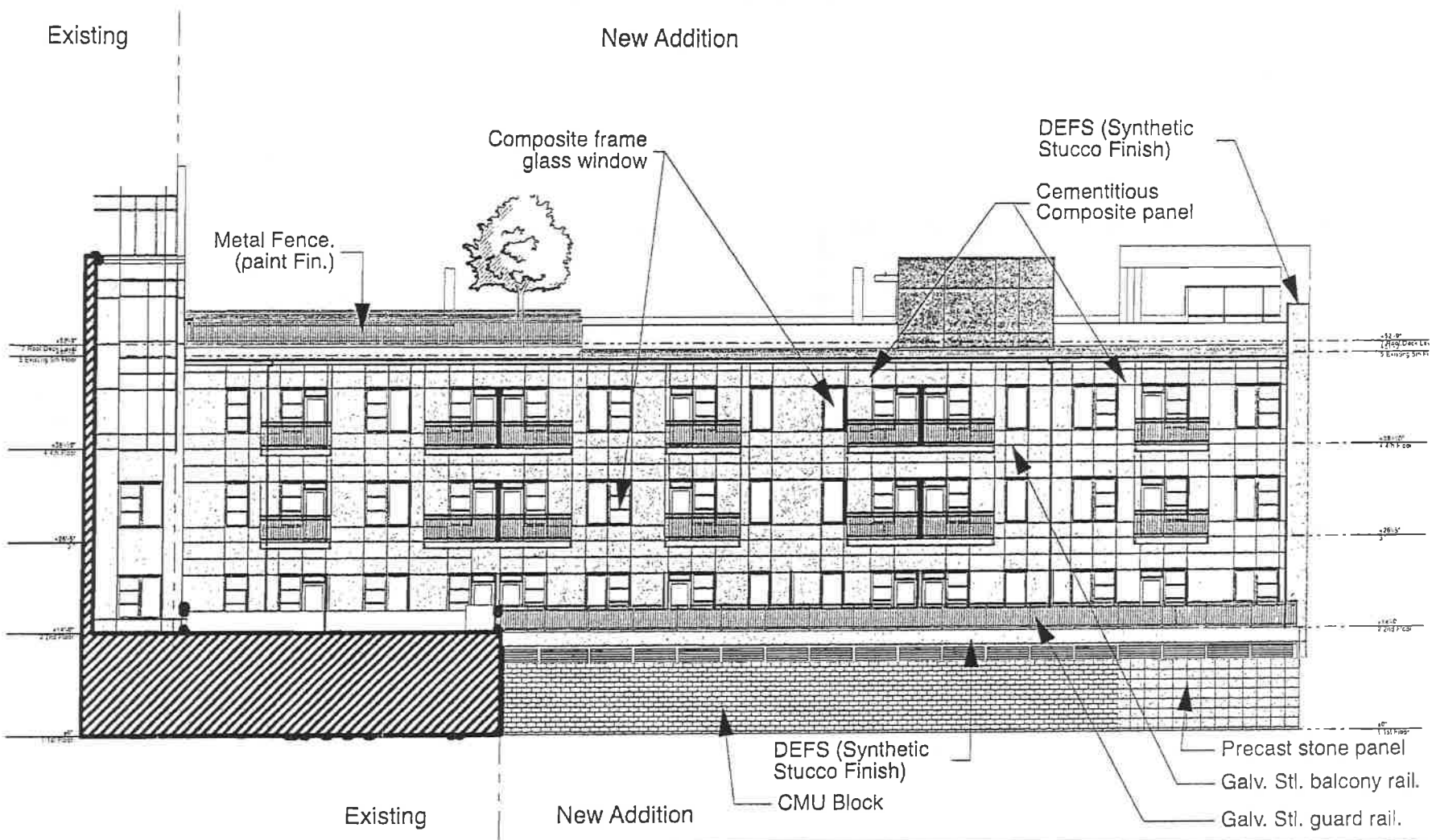
Green Roof Plan



6/25/2014

REPORTS OF COMMITTEES

84203



APPLICANT: CHICAGO TITLE LAND TRUST COMPANY,
as Trustee under Trust Agreement dated December 12, 2012
and known as Trust No. 8002360838

ADDRESS: 1212-1236 W. Madison Street
1-9 N. Elizabeth Street, Chicago, IL 60607

DATE INTRODUCED: April 2nd, 2014

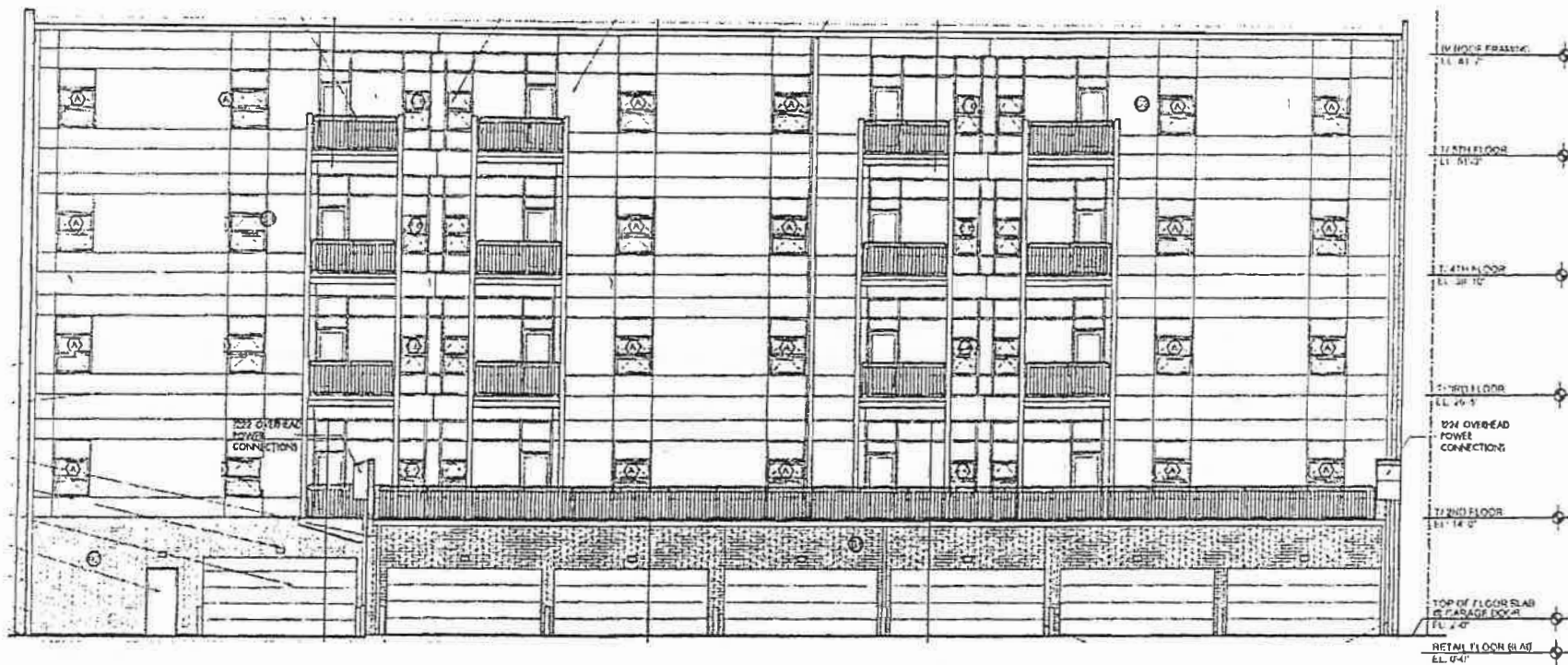
CHICAGO PLAN COMMISSION: June 19th, 2014

Public Alley (North) Elevation I

Existing

84204

JOURNAL--CITY COUNCIL--CHICAGO



APPLICANT: CHICAGO TITLE LAND TRUST COMPANY,
 as Trustee under Trust Agreement dated December 12, 2012
 and known as Trust No. 8002360838

 ADDRESS: 1212-1236 W. Madison Street
 1-9 N. Elizabeth Street, Chicago, IL 60607

 DATE INTRODUCED: April 2nd, 2014

 CHICAGO PLAN COMMISSION: June 19th, 2014

Public Alley (North) Elevation II

6/25/2014

New Addition

Existing

DEFS (Synthetic Stucco Finish)

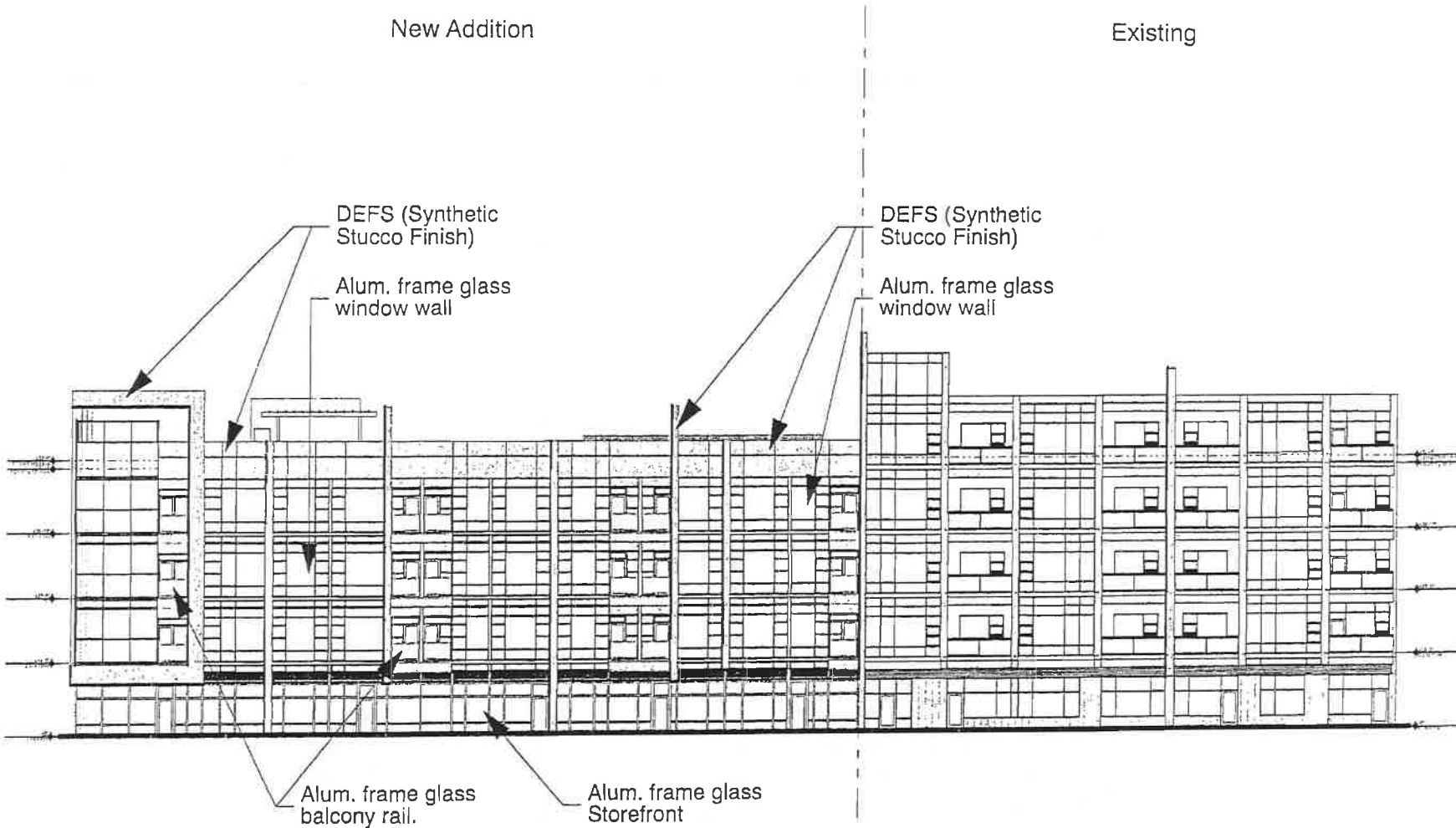
Alum. frame glass window wall

DEFS (Synthetic Stucco Finish)

Alum. frame glass window wall

Alum. frame glass balcony rail.

Alum. frame glass Storefront



6/25/2014

REPORTS OF COMMITTEES

APPLICANT:

CHICAGO TITLE LAND TRUST COMPANY,
as Trustee under Trust Agreement dated December 12, 2012
and known as Trust No. 8002360838

ADDRESS:

1212-1236 W. Madison Street
1-9 N. Elizabeth Street, Chicago, IL 60607

DATE
INTRODUCED:

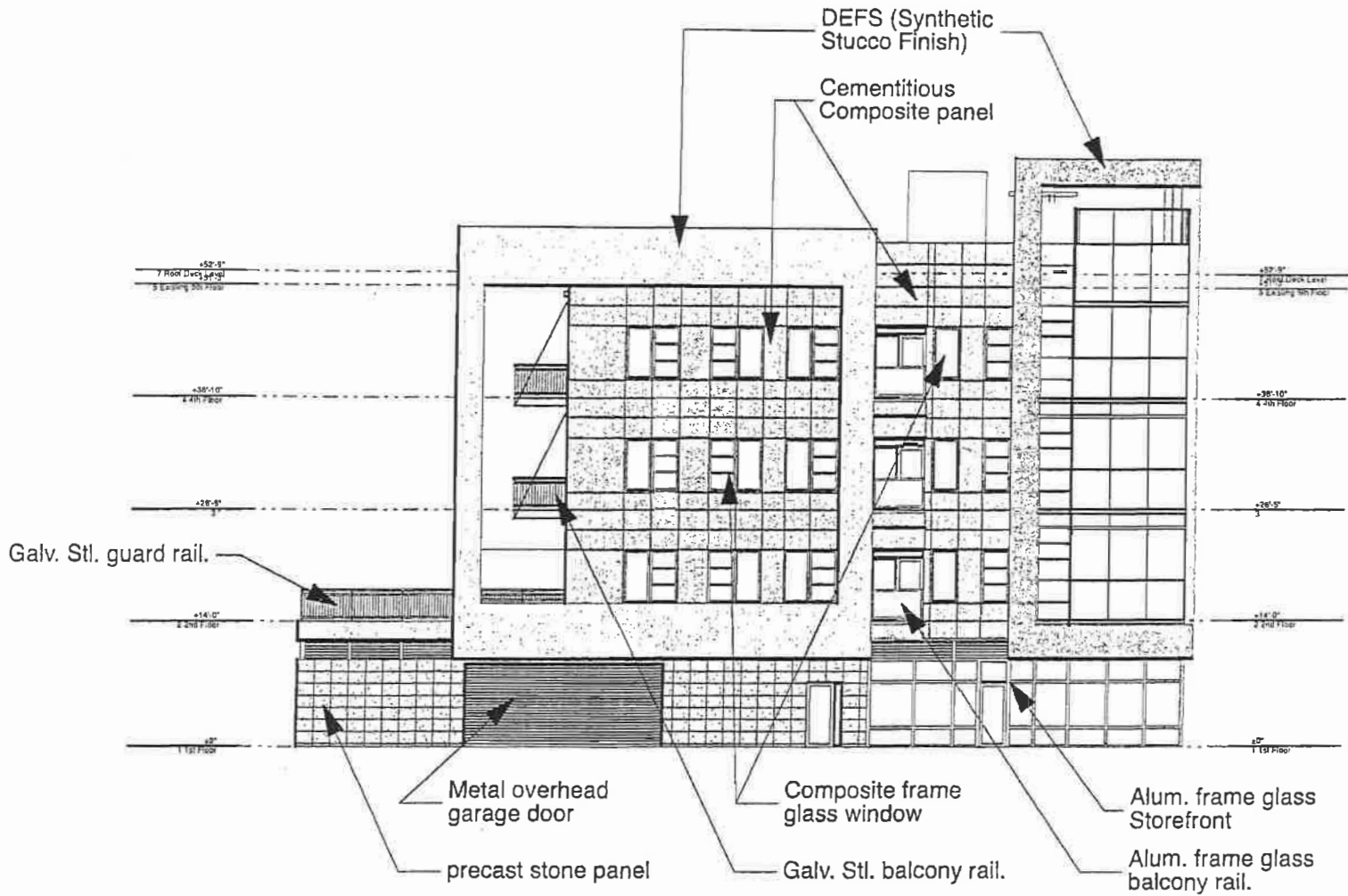
April 2nd, 2014

CHICAGO PLAN
COMMISSION:

June 19th, 2014

Madison Street (South) Elevation

84205



APPLICANT: CHICAGO TITLE LAND TRUST COMPANY,
 as Trustee under Trust Agreement dated December 12, 2012
 and known as Trust No. 8002360838

 ADDRESS: 1212-1236 W. Madison Street
 1-9 N. Elizabeth Street, Chicago, IL 60607

 DATE INTRODUCED: April 2nd, 2014

 CHICAGO PLAN COMMISSION: June 19th, 2014

Elizabeth Street (West) Elevation