

Cook County, Illinois

W $\frac{1}{2}$ SW $\frac{1}{4}$ Section 35 - 39 - 14

HYDE PARK & SOUTH



"A"
ELLIS' EAST ADD. TO CHICAGO in the S. E. 1/4 of Sec. 34 and Frac'l. Sec. 35-39-14. Ante-Fire.
Rec. 03/21/1855 Doc. 9999999999

"B"
CLEAVERVILLE, a sub. of the N. 70.20 acs. of Frac'l. Sec. 2-38-14, also 20 acs. of the S. E. part of Frac'l. Sec. 35-39-14 and Lot 72 in Ellis' East Add, to Chicago (see "A"). Ante-Fire.
Rec. 10/14/1858 Doc. 9999999999

"C"
ASSESSOR'S DIV. of Lots 74, 75, & 76 in Ellis' East Add. (see "A"). Ante-Fire.
Rec. 10/06/1869 Doc. 9999999999

"D"
ABELL'S SUB. of Lot 1 of Blk. 5 of Cleaverville (see "B"). Ante-Fire.
Rec. Doc. 9999999999

"E"
F. F. FRENCH'S RESUB. of Lots 11 & 12 of Abell's Sub. (see "D"). Ante-Fire.
Rec. Doc. 9999999999

"F"
SUB. of Lots 81 & 82 of Ellis' East Add. (see "A"). Ante-Fire.
Rec. Doc. 9999999999

"G"
SUB. of Lots 73 of Ellis' East Add. (see "A"). Ante-Fire.
Rec. Doc. 9999999999

"H"
S. S. MILLAR'S RESUB. of Sub-lots 3 & 4 and the S. 10 ft. of Sub-lot 2 in Sub. of Lot 73 (see "G"). Ante-Fire.
Rec. Doc. 9999999999

"J"
HOLLAND & FREAR'S SUB. of Sub-lots 4, 5, & 6 in S. S. Miller's Resub. (see "H").
Rec. 03/01/1872 Doc. 15846

"K"
SUB. of Sub-lots 5 & 6 in Sub. of Lot 73 (see "G"). Ante-Fire.
Rec. 06/14/1872 Doc. 37000

"L"
SUB. of Lots 9 & 10 in Blk. 2 of Cleaverville (see "B").
Rec. 04/11/1873 Doc. 92235

"M"
SUB. of Sub-lot 6 in the Sub. of Lots 81 & 82 (see "F").
Rec. 05/30/1874 Doc. 164158

"N"
SUB. of Sub-lots 2 in the Sub. of Lots 9 & 10 in Blk. 2 (see "L").
Rec. 06/03/1878 Doc. 182929

"O"
SUB. of Sub-lots 5 & 6 in Sub. of Lots 81 & 82 (see "F").
Rec. 02/24/1880 Doc. 258603

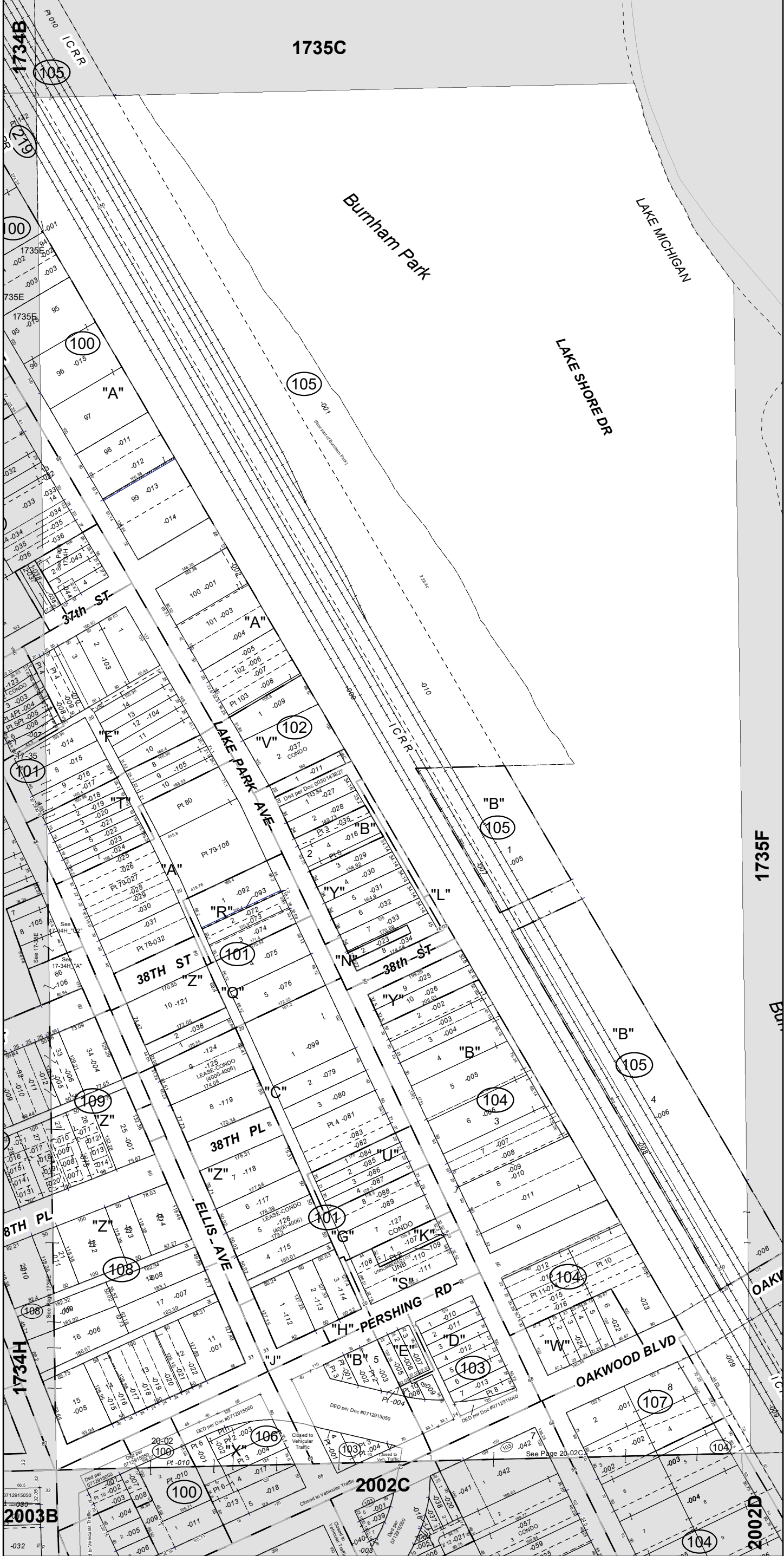
"P"
GEORGE B. DeBAR'S SUB. of Lot 67 in Ellis' East Add. to Chicago, except the Western 130 ft. thereof (see "A").
Rec. 01/19/1995 Doc. 2163542

"Q"
SUB. of Lot 77 in Ellis' East or 2nd Add. to Chicago (see "A").
Rec. 07/11/1885 Doc. 639030

"R"
GEORGE C. FRY'S SUB. of the N. E. 1/4 of Lot 78 of Ellis' East Add.
Rec. 03/20/1886 Doc. 700248

"S"
THE HARRIET B. DUNHAM HOMESTEAD in Ellis' East or 2nd Add. to Chicago of part of Sections 34 & 35-39-14.
Rec. 05/14/1887 Doc. 829110

"T"
CAROLINE COOK'S SUB. of Lot 80 of Ellis' East Add. to Chicago (except the S. E.



2003B
2002C
2002D

Cook County, Illinois

W½ SW¼ Section 35 - 39 - 14

HYDE PARK & SOUTH



CONTINUED

1/4 thereof). Note of correction
 Rec. 03/17/1888 Doc. 933297

"U"

WOOD'S SUB. of the S. 82 ft. of Sub-lot 4
 of Assessor's Div. of Lots 74, 75, & 76 (see "C").
 Rec. 04/15/1892 Doc. 1645214

"V"

CHARLES GREVE'S SUB. of Lot 103
 (except the N. W. 'ly 4-1/4 ft. thereof) in
 Ellis' East Add. Note of correction
 Rec. 08/05/1904 Doc. 3575253

"W"

MARY A. HOAGLAND SUB. of part of the
 S. 100 ft. of Lots 10 & 11 of Blk. 3 in
 Cleaverville (see "B").
 Rec. 11/09/1904 Doc. 3617737

"X"

RESUB. of LOTS 6, 7, & W. 34 ft. LOT 5
 BLOCK 5 in CLEAVERVILLE (See "B").
 Rec. 05/01/1867 Doc. 9999999999

"Y"

Burnham Park Manor Sub, a resubdivision of
 Part of Sub-lots 2 and 3 in Cleaverville Sub
 (See "B") and Lot 1 in Subdivision of Lots 9 and
 10 in Block 2 (See "L") and Lots 1, 3, and 4 in
 Sub of Sub-lot 2 (See "N")
 Rec. 01/30/2003 Doc. 0030143827

"Z"

MADDEN-WELLS SUB, a resubdivision in
 the SE 1/4 of Section 34 and the SW 1/4 of
 Fractional Section 35
 Rec. 03/24/2004 Doc. 0408445058

CONDOMINIUM: 17-35-101-125
 THE ARCHES CONDOMINIUM F-1 CONDO
 Rec. 11/06/2006 Doc. 0631015000

Unit	Unit	Unit
None = 4000	101 = 4001	102 = 4002
201 = 4003	202 = 4004	301 = 4005
302 = 4006		

CONDOMINIUM: 17-35-101-126
 THE ARCHES CONDOMINIUM E-1 CONDO
 Rec. 10/30/2006 Doc. 0630317064

Unit	Unit	Unit
None = 4000	101 = 4001	102 = 4002
201 = 4003	202 = 4004	301 = 4005
302 = 4006		

CONDOMINIUM: 17-35-101-127
 3862 S. LAKE PARK CONDO
 Rec. 09/11/2007 Doc. 0725415074

Unit	Unit	Unit
GN = 1001	1N = 1002	2N = 1003
3N = 1004	GS = 1005	1S = 1006
2S = 1007	3S = 1008	

CONDOMINIUM: 17-35-102-037
 The Lake Park Condo
 Rec. 04/04/2003 Doc. 0030452901
 Rec. 10/30/2006 Doc. 0630315055

Unit	Unit
3733-G = 1001	3733-1 = 1002
3733-2 = 1003	3733-3 = 1004
3735-G = 1005	3735-1 = 1006
3735-2 = 1007	3735-3 = 1008
P1 = 1009	P2 = 1010
P3 = 1011	